

NEW

FRONTLINE CASE STUDY

SCOTT'S SUBS EAST GREEN BAY, WISCONSIN



1100 S Huron Rd, Green Bay, WI 54311 | 920-393-1340 | www.frontlinebldg.com



Scott's Subs East Green Bay

DESIGN/BUILD CONTRACTOR:

Bayland Buildings

LOCATION:

Green Bay, WI

MATERIALS/PRODUCTS USED:

**Aluminum-Clad Oversized Direct Set
Fixed Frame Window
Commercial Outswing Doors**

BACKGROUND:

Scott's Subs was established in 1985 in Michigan's Upper Peninsula. They are known for their attention to detail, making mouth-watering sub sandwiches, homemade pizza, hand-dipped ice cream, and much more.



THE CHALLENGE:

Franchise owner, Mary Ellen Graham, has 20 plus years in residential design and construction wanted to create an open inviting environment for customers while pulling the outdoors in and gaining natural light. The main challenge was finding large expansive windows greater than 80 square feet and energy efficient that could withstand the intense and cold winters of Wisconsin. Her goal was to utilize today's popular building trends and display linear windows with expansive pieces of glass. She did not like the look of your typical aluminum store front windows and doors you see in most business or restaurant buildings. However, she understood the store needed a robust solution for windows and as well as a door system that could withstand high cycle usage.

THE RESULTS:

FrontLine® Bldg. Products, Inc. met all the required items on the list. With their ability to manufacture 1-1/8" LVL engineered wood core oversized aluminum clad direct set windows up to 100 square feet (about the area of an apartment bedroom) they were able to provide industry tested, sleek, and modern solutions.

[View Oversized Direct Set
Windows Literature](#)

Frontline's proprietary commercial out-swing door system was designed and engineered with high cycle usage in mind. The door is currently being utilized in one of today's premiere US restaurant chains. Engineered style and rail components, 1/4" aluminum bottom kick rail, high cycle proprietary non removeable hinge are just a few highlights.

[View BayShield® Commercial
Door Literature](#)



MORE ABOUT FRONTLINE® BLDG. PRODUCTS INC.:

FrontLine® is a leading manufacturer of maintenance-free aluminum cladding door frame systems, patio door frames, aluminum cladding garage door frame systems, composite door jambs & accessories, wood & aluminum grilles, commercial doors, specialty windows, transoms, and oversized direct set windows. FrontLine® Bldg. Products Inc. has been manufacturing individually engineered products with state-of-the-art technology while providing value and confidence to their customers for over 40 years.

Additional Project Photos



Visit our Website to view all of our products and literature:
www.frontlinebldg.com



FrontLine Window & Door Specs

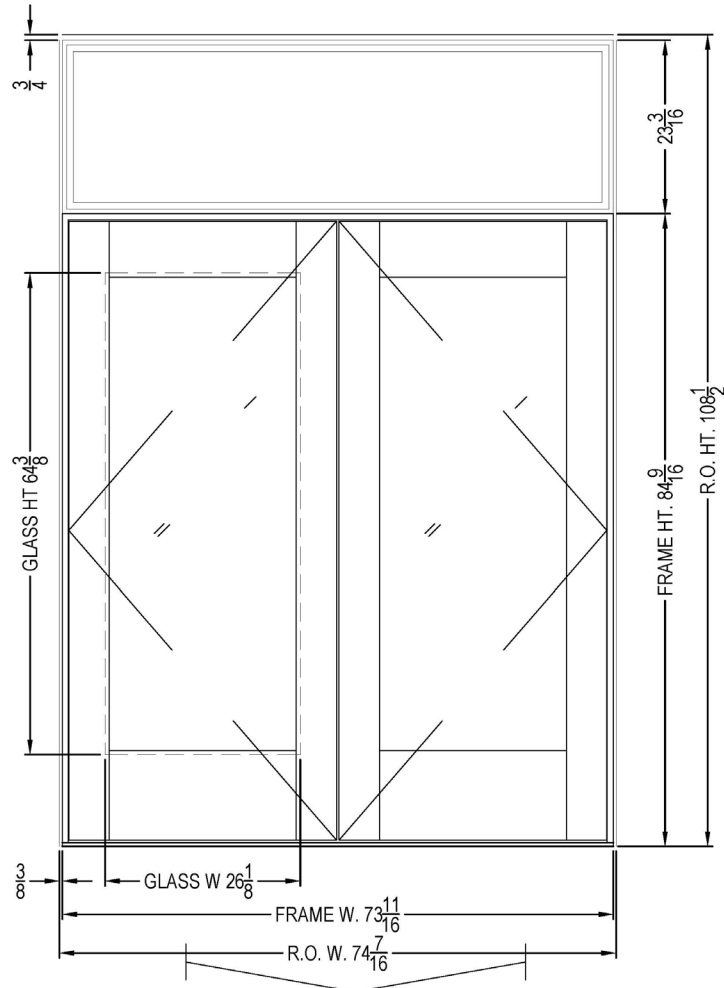
ARCHITECTURAL WINDOWS	CUST:	PO#:	DWG#: UTZZ6272171
	SHEET: ELEVATION VIEW	Lot ID#: ----	SO#: 571420
			DUE DATE: ----



Member of the Bay Family of Companies

P.O. BOX 505
610 JENSEN DR
MEDFORD, WI 54451

PH: 715-748-2288
1-800-223-4792
FAX: 715-748-2881



SIGN:
DATE:

DESC: OSD DOOR	INT CASING: NA	GLASS: 3/4" IG LOE 70-36 TEMP, ARG	
JAMB : 4.563	EXT CASING: NONE	GLASS SPACER: SS	
HEAD FIN: ----	INT FINISH: PINE, UC P515 BLACK (20 GLOSS)	GIAS: ----	QTY: 1
SILL FIN: 5" SADDLE, 421S	EXT FINISH: CLAD, 162 BLACK 2605 KYNAR	GRILLE: ----	DRAWN BY: DALES
SIDE FIN: ----			DWG DATE: 3/12/2021

X:\floor\buswing\Production drawings\Prod dwg\UTZZ6272171.dwg, 4/19/2022 6:50:29 AM, CFDM, AutoCAD PDF (High Quality Print).pc3

FrontLine Window & Door Specs

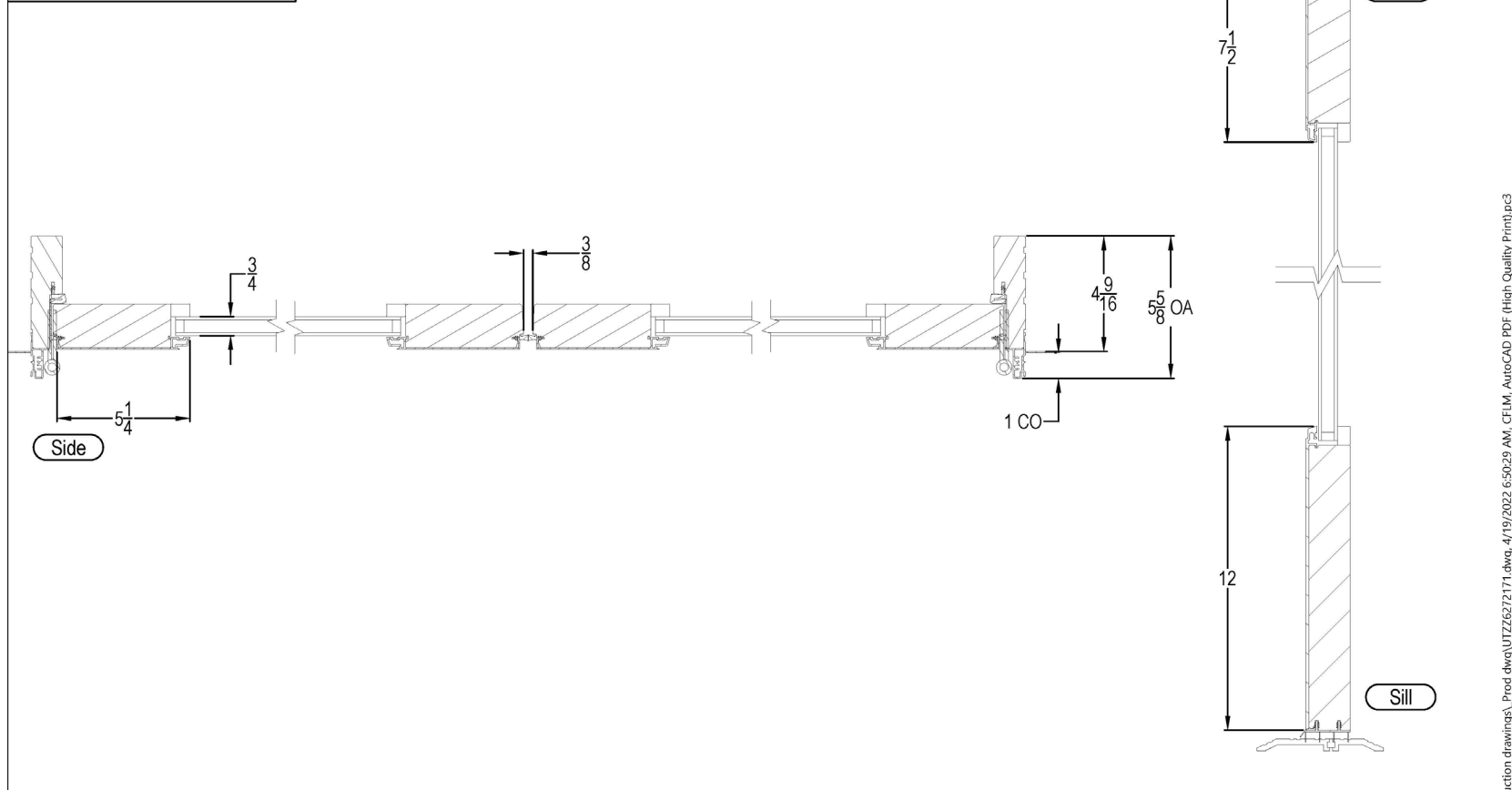
ARCHITECTURAL WINDOWS	CUST:	PO#:	DWG#: UTZZ6272171
	SHEET: X-SECTION VIEW	Lot ID#: ----	SO#: 571420
			DUE DATE: ----



Member of the Bay Family of Companies

P.O. BOX 505
610 JENSEN DR
MEDFORD, WI 54451

PH: 715-748-2288
1-800-223-4792
FAX: 715-748-2881



DESC: OSD DOOR	INT CASING: NA	GLASS: 3/4" IG LOE 70-36 TEMP, ARG	
JAMB : 4.563	EXT CASING: NONE	GLASS SPACER: SS	
HEAD FIN: ----	INT FINISH: PINE, UC P515 BLACK (20 GLOSS)	GIAS: ----	QTY: 1
SILL FIN: 5" SADDLE, 421S	EXT FINISH: CLAD, 162 BLACK 2605 KYNAR	GRILLE: ----	DRAWN BY: DALES
SIDE FIN: ----			DWG DATE: 3/12/2021

X:\floor\buswing\Production drawings\Prod dwg\UTZZ6272171.dwg, 4/19/2022 6:50:29 AM, CFDM, AutoCAD PDF (High Quality Print).pc3

FrontLine Window & Door Specs

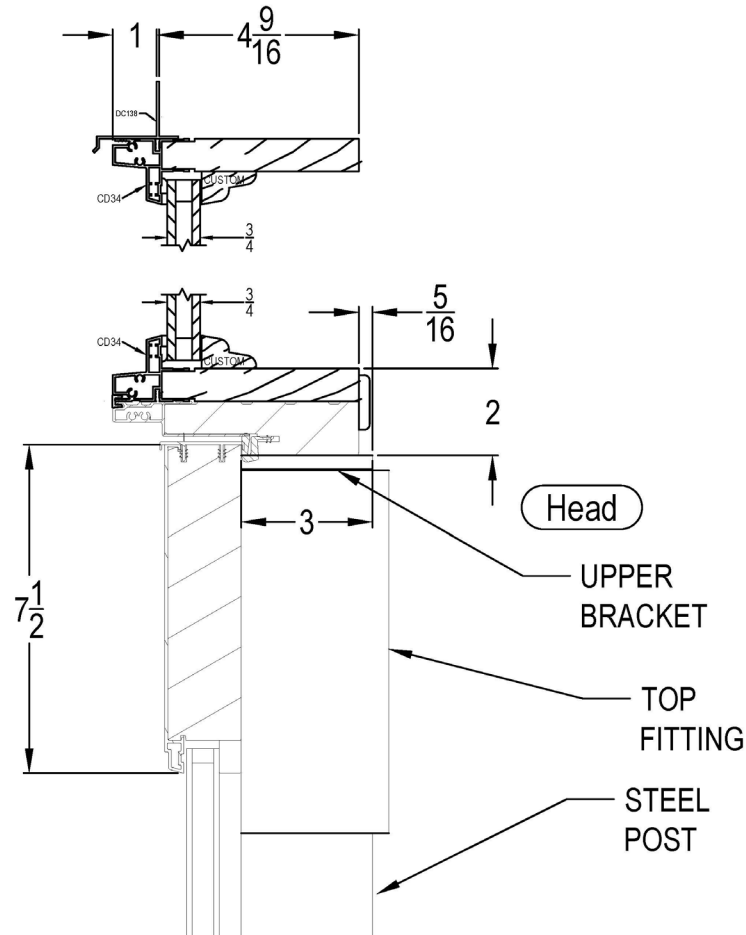
ARCHITECTURAL WINDOWS	CUST:	PO#:	DWG#: UTZZ6272171
	SHEET: X-SECTION VIEW	Lot ID#: ----	SO#: 571420
			DUE DATE: ----



Member of the Bay Family of Companies

P.O. BOX 505
610 JENSEN DR
MEDFORD, WI 54451

PH: 715-748-2288
1-800-223-4792
FAX: 715-748-2881



DESC: OSD DOOR	INT CASING: NA	GLASS: 3/4" IG LOE 70-36 TEMP, ARG	
JAMB : 4.563	EXT CASING: NONE	GLASS SPACER: SS	
HEAD FIN: ----	INT FINISH: PINE, UC P515 BLACK (20 GLOSS)	GLAS: ----	QTY: 1
SILL FIN: 5" SADDLE, 421S	EXT FINISH: CLAD, 162 BLACK 2605 KYNAR	GRILLE: ----	DRAWN BY: DALES
SIDE FIN: ----			DWG DATE: 3/12/2021

X:\floor\buswing\Production drawings\Prod dwg\UTZZ6272171.dwg, 4/19/2022 6:50:30 AM, CFILM, AutoCAD PDF (High Quality Print).pc3

FrontLine Window & Door Specs

ARCHITECTURAL WINDOWS



P.O. BOX 505
610 JENSEN DR
MEDFORD, WI 54451

PH: 715-748-2288
1-800-223-4792
FAX: 715-748-2881

CUST: CASH SALES - FLG HOUSE

SHEET: ELEVATION VIEW

Lot ID#: 16128595-2

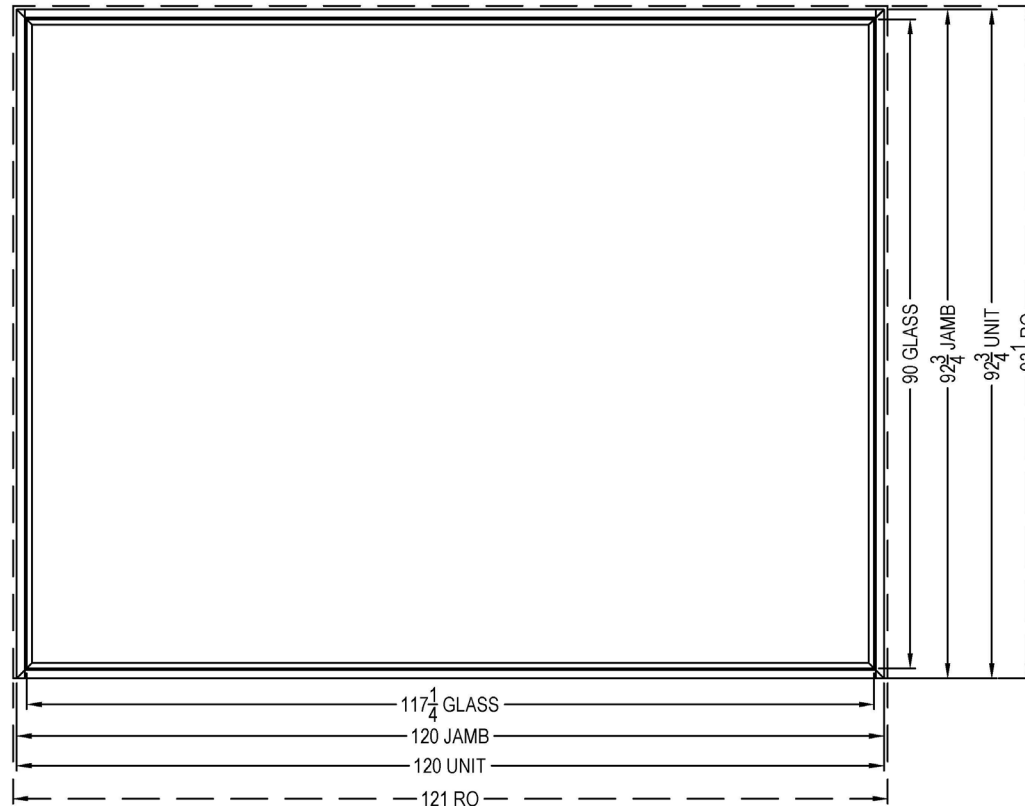
PO#:

SO#: 570603-2

DWG#: 570603-2

DUE DATE: ----

SIGN:
DATE:



X:\CADDATA\B&B Windows\Quotes\570603-2.dwg, 3/22/2021 3:14:27 PM, AliceB

DESC: RECTANGLE	INT CASING: NA	GLASS: 1 IN. LOW-E IG DUAL IG SN68 TEMPERED W/ARGON	
JAMB : 4.5625	EXT CASING: NONE	IG SPACER: MILL FINISH	
HEAD FIN: FIN APPLIED	INT FINISH: 421 MI BLACK (20 GLOSS) RADIATA	GIA: ----	QTY: 3
SILL FIN: FIN	EXT FINISH: 162 BLACK AAMA 2605 KYNAR	GRILLE: ----	DRAWN BY: HFLM
SIDE FIN: FIN			DWG DATE: 01/25/21

FrontLine Window & Door Specs

ARCHITECTURAL WINDOWS



P.O. BOX 505
610 JENSEN DR
MEDFORD, WI 54451

PH: 715-748-2288
1-800-223-4792
FAX: 715-748-2881

CUST: CASH SALES - FLG HOUSE

SHEET: X-SECTION VIEW

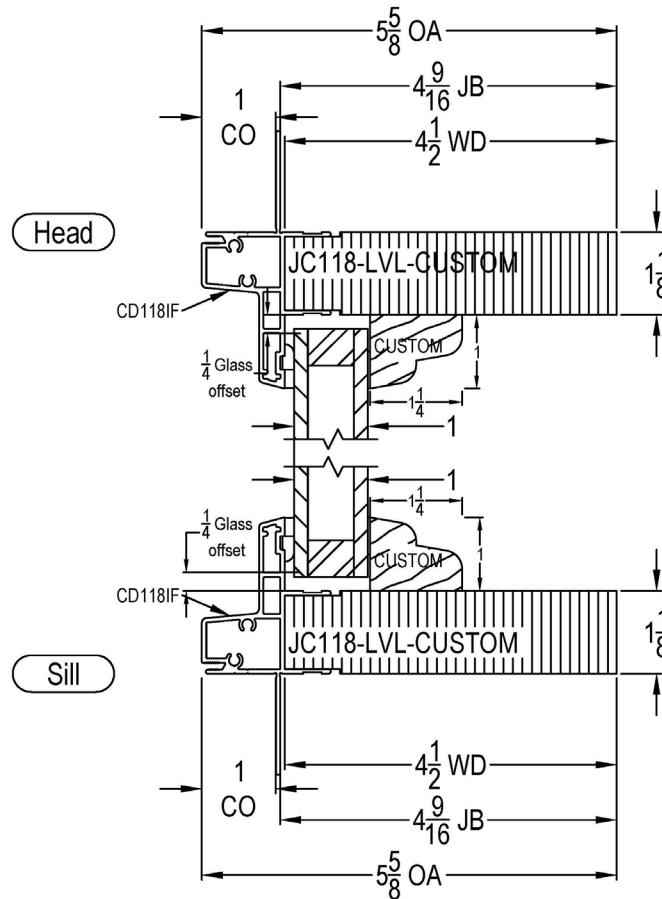
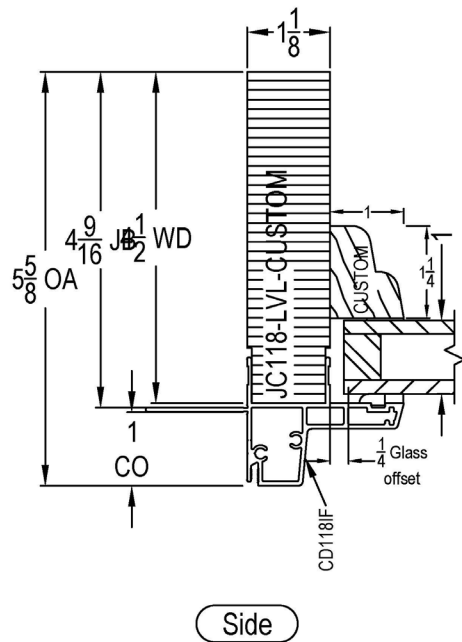
Lot ID#: 16128595-2

PO#:

SO#: 570603-2

DWG#: 570603-2

DUE DATE: ----



DESC: RECTANGLE	INT CASING: NA	GLASS: 1 IN. LOW-E IG DUAL IG SN68 TEMPERED W/ARGON	
JAMB : 4.5625	EXT CASING: NONE	IG SPACER: MILL FINISH	
HEAD FIN: FIN APPLIED	INT FINISH: 421 MI BLACK (20 GLOSS) RADIATA	GIA: ----	QTY: 3
SILL FIN: FIN	EXT FINISH: 162 BLACK AAMA 2605 KYNAR	GRILLE: ----	DRAWN BY: HFLM
SIDE FIN: FIN			DWG DATE: 01/25/21

X:\CADDATA\B&B Windows\Quotes\570603-2.dwg, 3/22/2021 3:14:28 PM, AliceB