

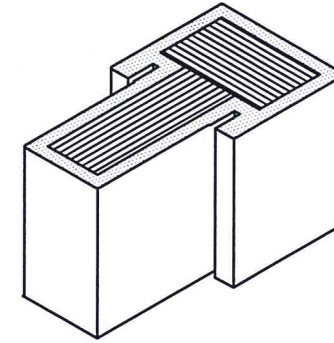


**"BMI Frame"**  
**Continuous Head & Sill System**  
**(Utilizing Composite Components)**  
**INSWING / OUTSWING**  
**"NON-IMPACT"**

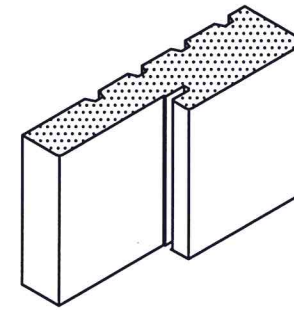
GENERAL NOTES

1. This product has been evaluated and is in compliance with the 7th Edition (2020) Florida Building Code (FBC) structural requirements excluding the "High Velocity Hurricane Zone" (HVHZ).
2. Product anchors shall be as listed and spaced as shown on details. Anchor embedment to base material shall be beyond wall dressing or stucco.
3. When used in areas requiring wind borne debris protection, this product is required to be protected with an impact resistant covering that complies with FBC Sections 1609.1.2 & R301.2.1.2.
4. This "NON-IMPACT" door jamb & mullion, as components, are to be used in combination as a substitute for a similar door jamb & mullion in a non-impact approved door system possessing a current Florida Statewide Product Approval (excluding the "HVHZ").
5. The design pressure of the assembly shall be the lesser of the design pressure for the door assembly shown in this approval or the design pressure of the door assembly used in conjunction with this approval.
6. The maximum frame size of the door assembly shall be lesser of the maximum frame size stated in this approval or the maximum frame size of the door assembly approval used in conjunction with this approval.
7. For 2x stud framing construction, anchoring of these units shall be the same as that shown for 2x buck masonry construction.
8. Site conditions that deviate from the details of this drawing require further engineering analysis by a licensed engineer or registered architect.

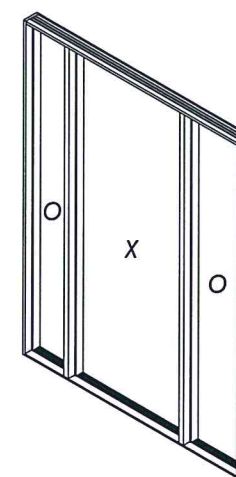
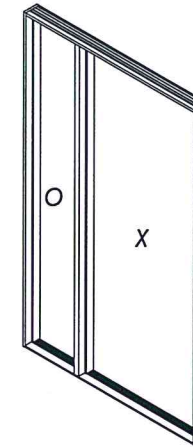
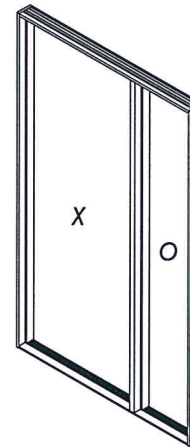
TABLE OF CONTENTS			
SHEET #	DESCRIPTION	SHEET #	DESCRIPTION
1	Typical elevations, design pressures & general notes	6	Horizontal Cross Sections
2	Elevations	7	Vertical Cross Sections (Thresholds)
3	Horizontal & Vertical Cross Sections (2X Buck)	8	2X Buck Anchoring
4	Horizontal & Vertical Cross Sections (1X Buck)	9	Frame Anchoring & Hardware Details
5	Horizontal & Vertical Cross Sections (Dir. to Masonry)	10	Bill of Materials & Components



**BMI Frame**  
**Mullion**



**BMI Frame**  
**Head & Side Jamb**



CONFIGURATION	MAX. FRAME DIMENSION	DESIGN PRESSURE (PSF) INSWING		DESIGN PRESSURE (PSF) OUTSWING	
		POSITIVE	NEGATIVE	POSITIVE	NEGATIVE
		OX, XO	53.0" x 81.5"	<b>+60.0</b>	<b>-65.0</b>
OXO	68.5" x 81.5"	<b>+60.0</b>	<b>-65.0</b>	<b>+60.0</b>	<b>-60.0</b>

LFS

8-P. 22

Documents Prepared By:  
 Lyndon F. Schmidt  
 P.E. No. 43409

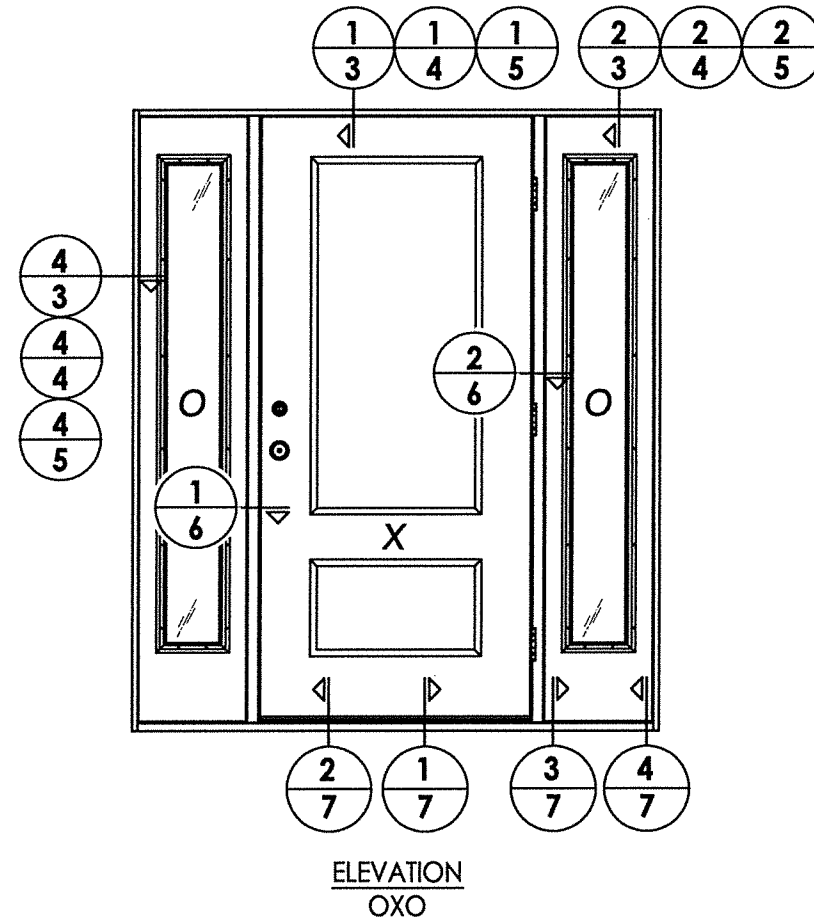
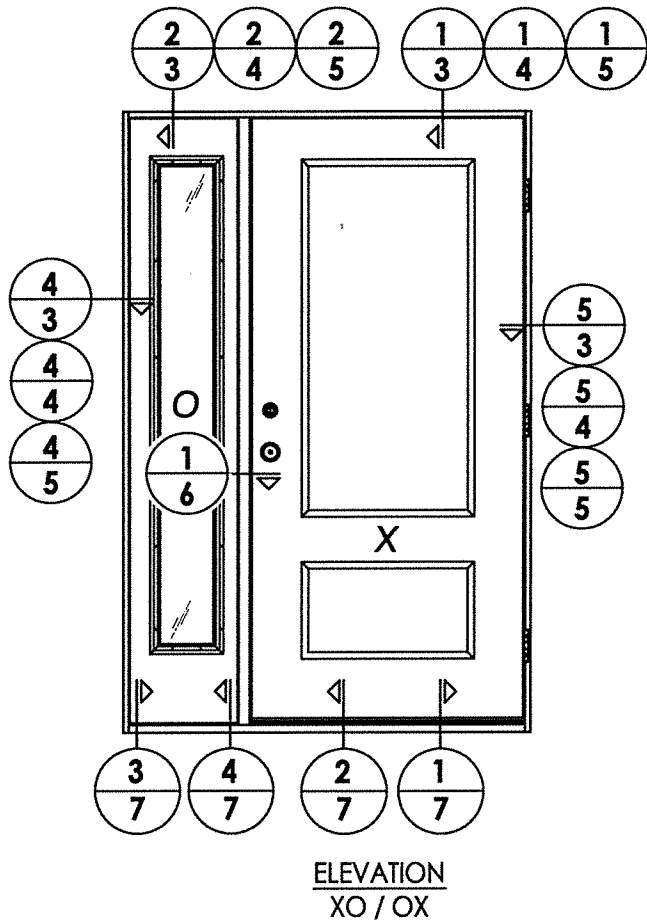
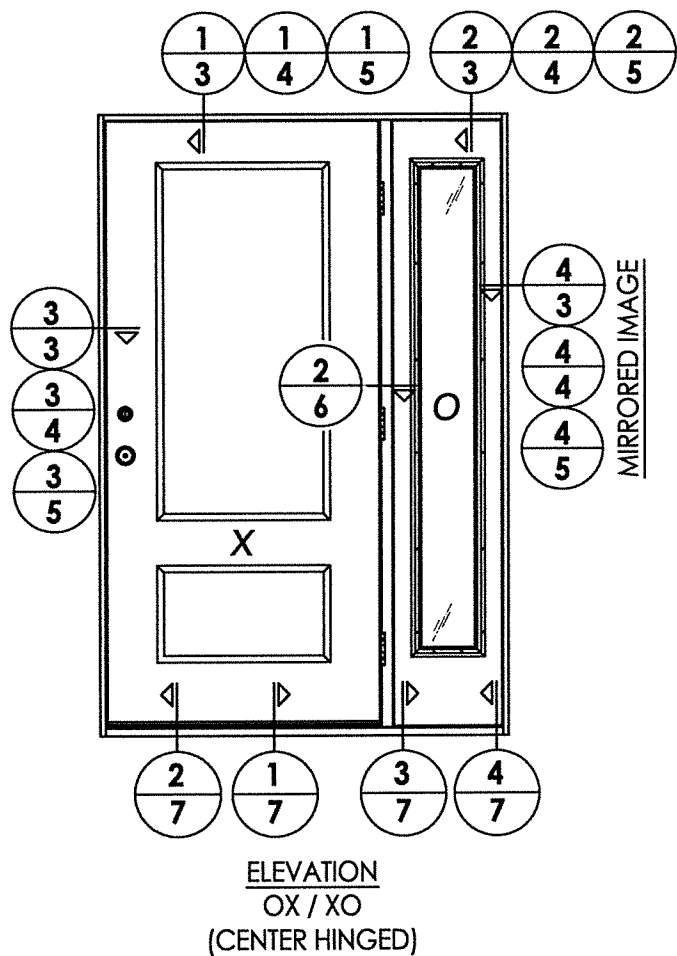
**RW** BUILDING CONSULTANTS, INC.  
 P.O. Box 230, Valrico, FL 33595  
 Phone No.: 813.659.9197  
 FBPE Registry No. 9813

NO.	DATE	BY	REVISIONS

DATE: 7/05/22  
 SCALE: N.T.S.  
 DWG. BY: LFS  
 CHK. BY: RW  
 DRAWING NO.:  
 FL-41560.2  
 SHEET 1 OF 10

Z:\Clients\BMVA - Florida Product Approvals\FL-41560\C - Drawings\FL 41560 (2020)\FL-41560.2.dwg

Z:\Clients\BM\A - Florida Product Approvals\FL-41560 (2020)\FL-41560.2.dwg

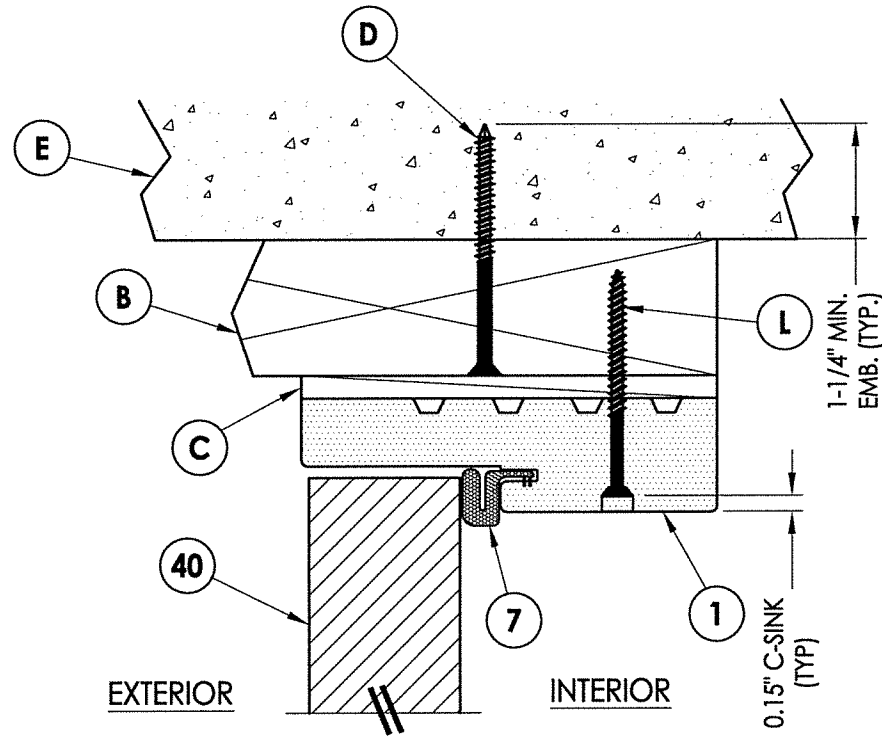


NOTE:  
SEE SEPARATE SIDE-HINGED DOOR & SIDELITE  
FLORIDA PRODUCT APPROVAL FOR DOOR & SIDELITE  
CONSTRUCTION DETAILS NOT SHOWN, INCLUDING  
LOCK HARDWARE, HINGE & THRESHOLD CONNECTIONS.

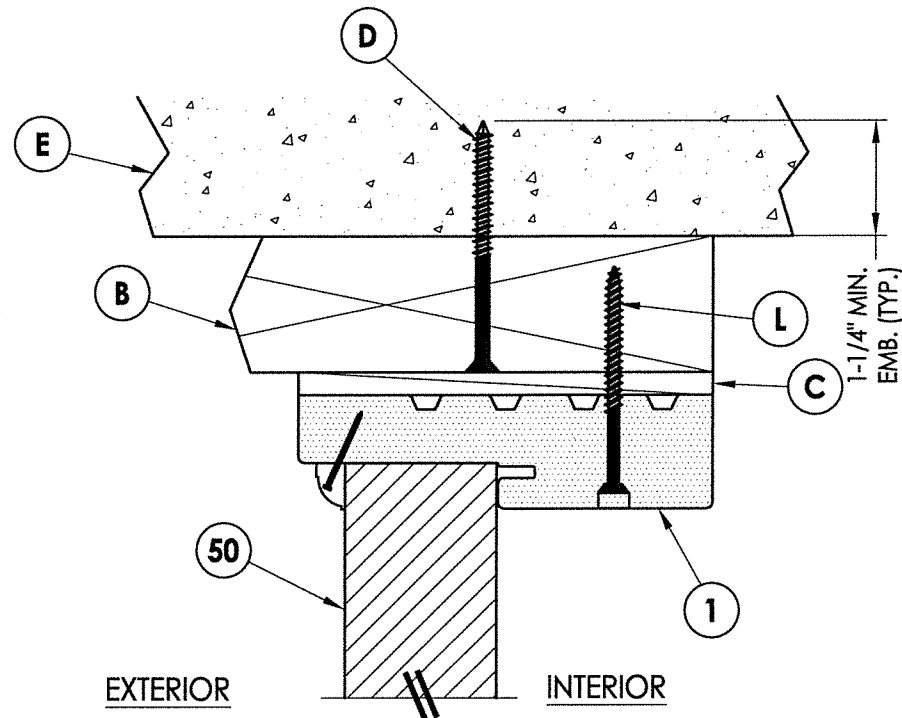
Professional Engineer  
L. F. SCHMIDT  
No. 43409  
8.8.22  
Lyndon F. Schmidt  
P.E. No. 43409  
BUILDING CONSULTANTS, INC.  
P.O. Box 230, Valrico, FL 33595  
Phone No.: 813.659.9197  
FBPE Registry No. 9813

PRODUCT:	BMI COMPONENTS		
PART OR ASSEMBLY:	ELEVATIONS		
DATE:	7/05/22		
SCALE:	N.T.S.		
DWG. BY:	LFS		
CHK. BY:	RW		
DRAWING NO.:	FL-41560.2		
SHEET	2 OF 10		
NO.	DATE	REVISIONS	BY

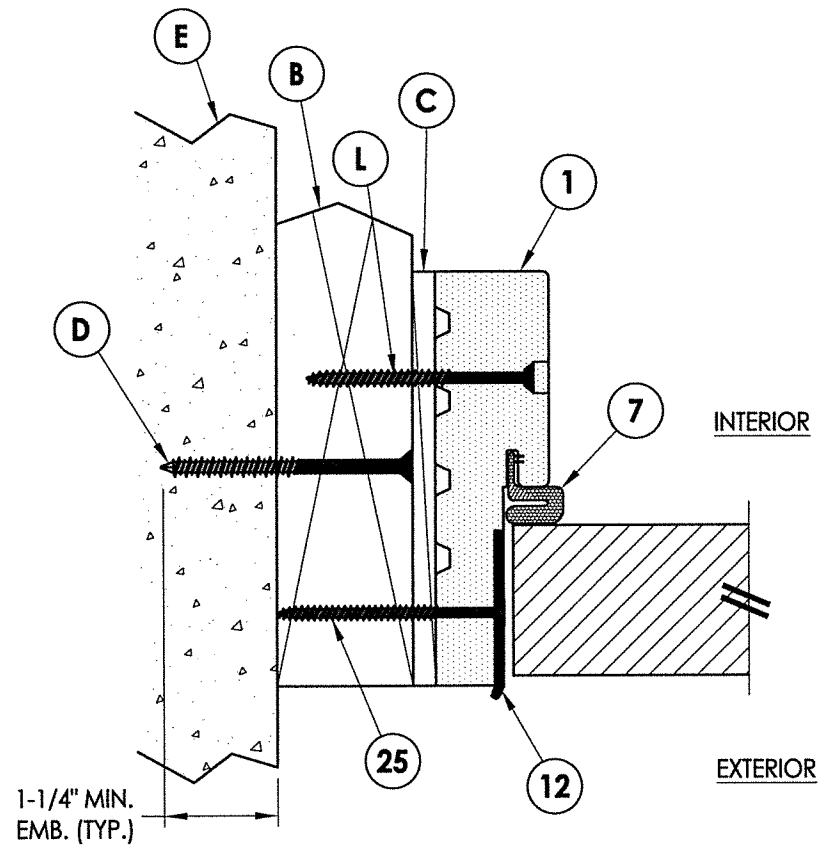
© 2022 R.W. BUILDING CONSULTANTS INC.



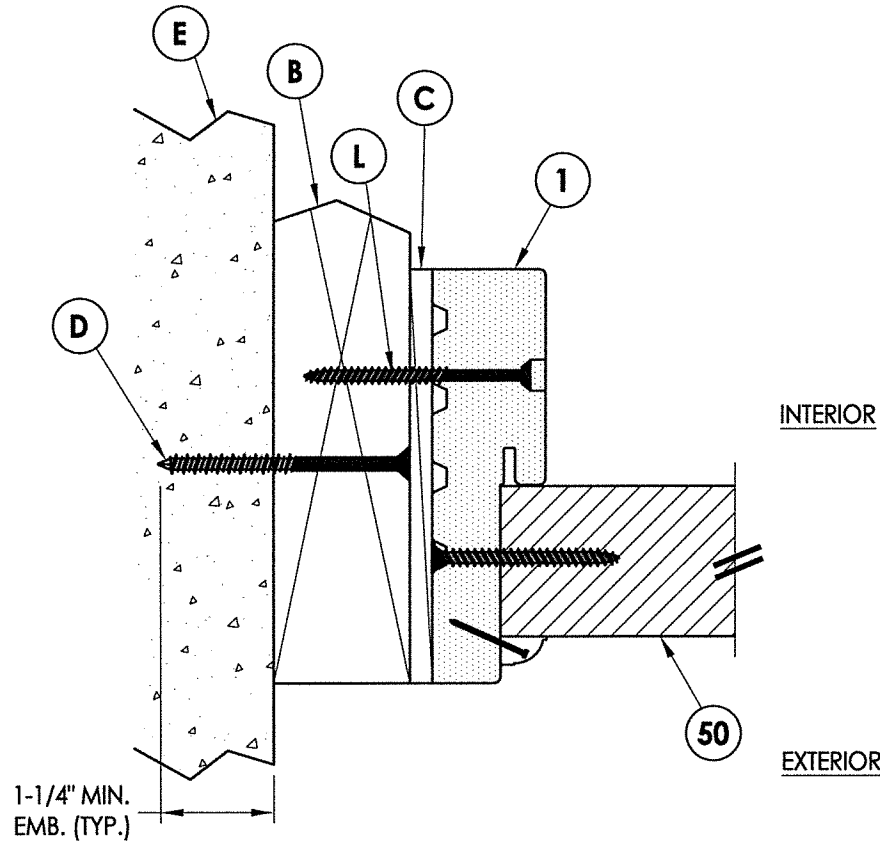
**1** VERTICAL CROSS SECTION  
**3** Outswing shown (Inswing similar)



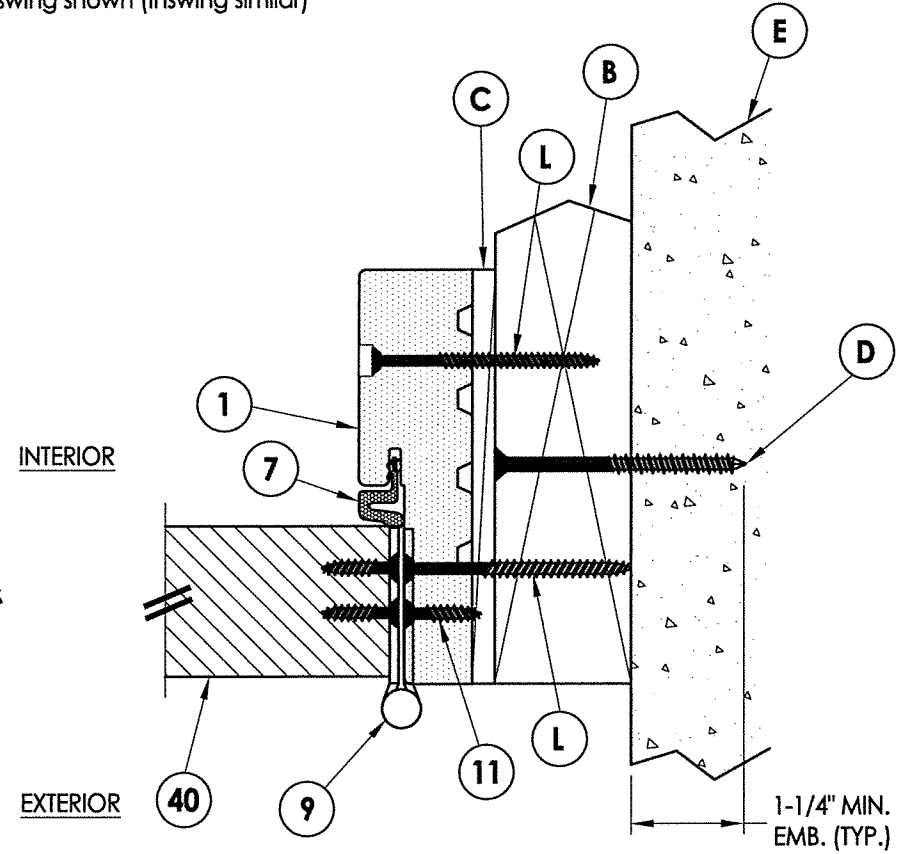
**2** VERTICAL CROSS SECTION  
**3** Outswing shown (Inswing similar)



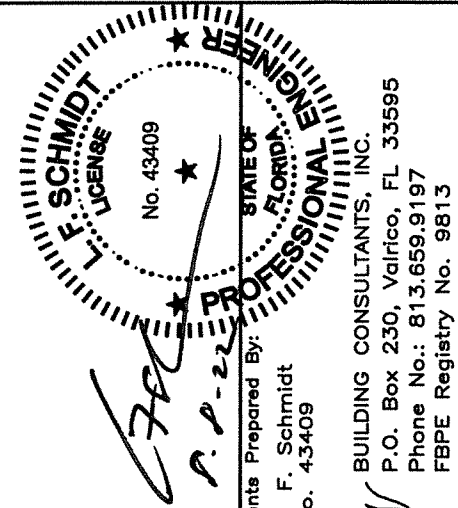
**3** HORIZONTAL CROSS SECTION  
**3** Outswing shown (Inswing similar)



**4** HORIZONTAL CROSS SECTION  
**3** Outswing shown (Inswing similar)



**5** HORIZONTAL CROSS SECTION  
**3** Outswing shown (Inswing similar)



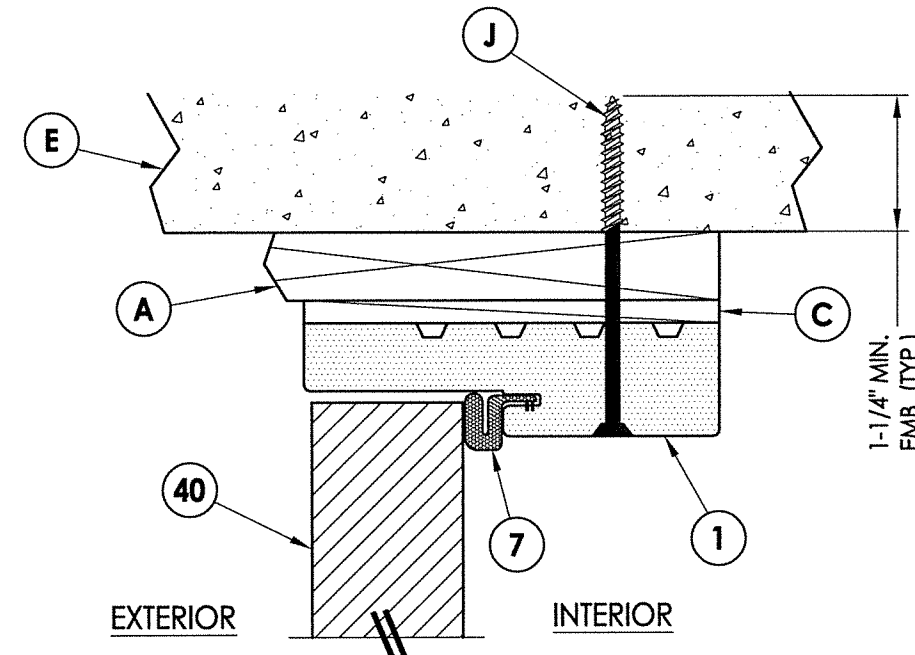
Documents Prepared By:  
 Lyndon F. Schmidt  
 P.E. No. 43409

RW  
 BUILDING CONSULTANTS, INC.  
 P.O. Box 230, Vairco, FL 33595  
 Phone No.: 813.659.9197  
 FBPE Registry No. 9813

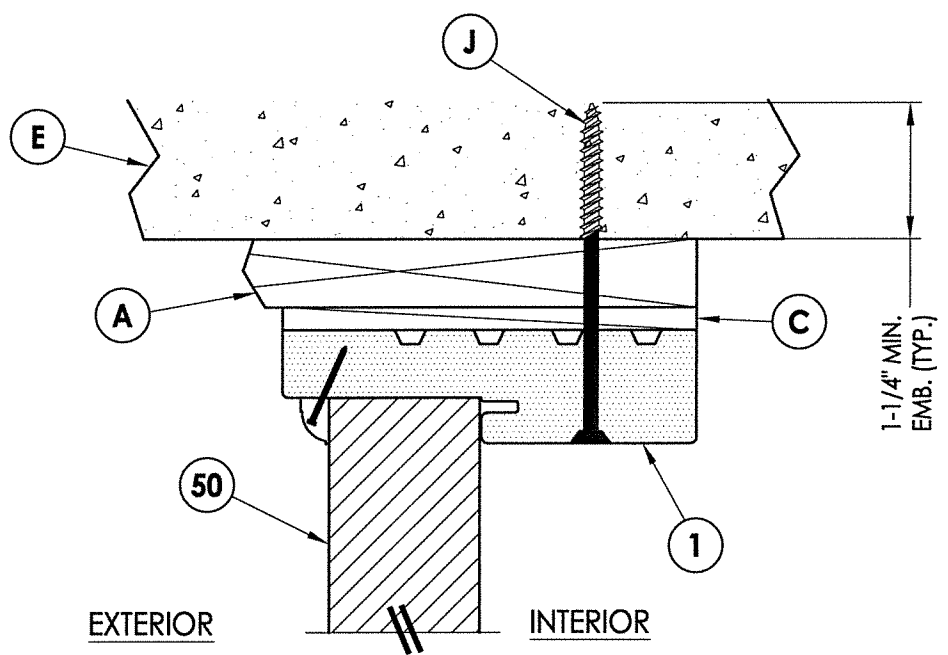
PRODUCT: BMI COMPONENTS  
 PART OR ASSEMBLY: HORIZONTAL & VERTICAL CROSS SECTIONS (2X BUCK)

NO.	DATE	BY	REVISIONS

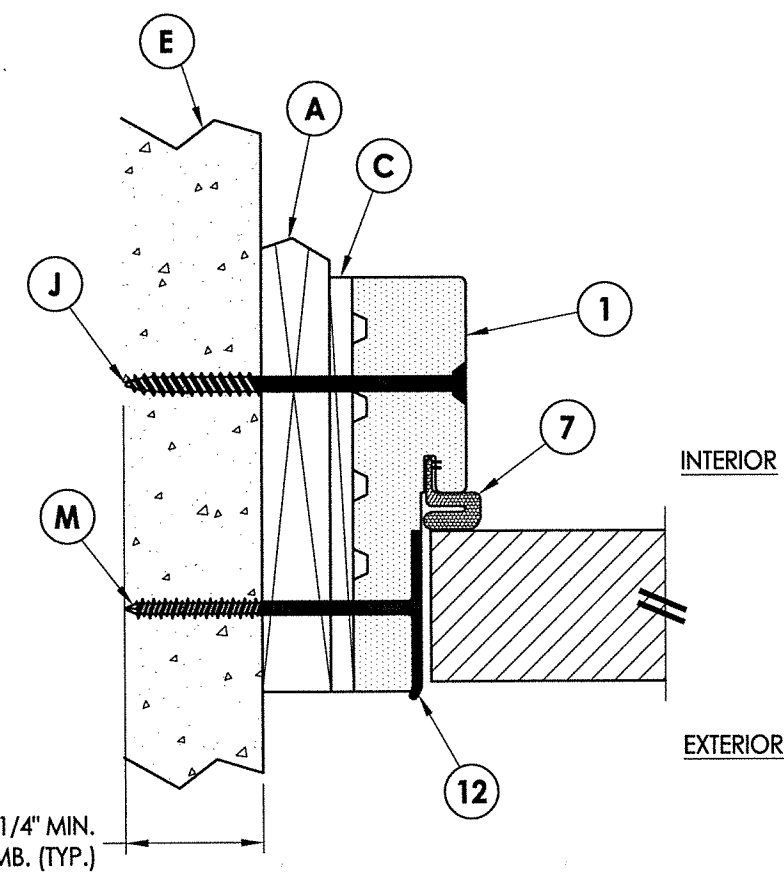
DATE: 7/05/22  
 SCALE: N.T.S.  
 DWG. BY: LFS  
 CHK. BY: RW  
 DRAWING NO.: FL-41560.2  
 SHEET 3 OF 10



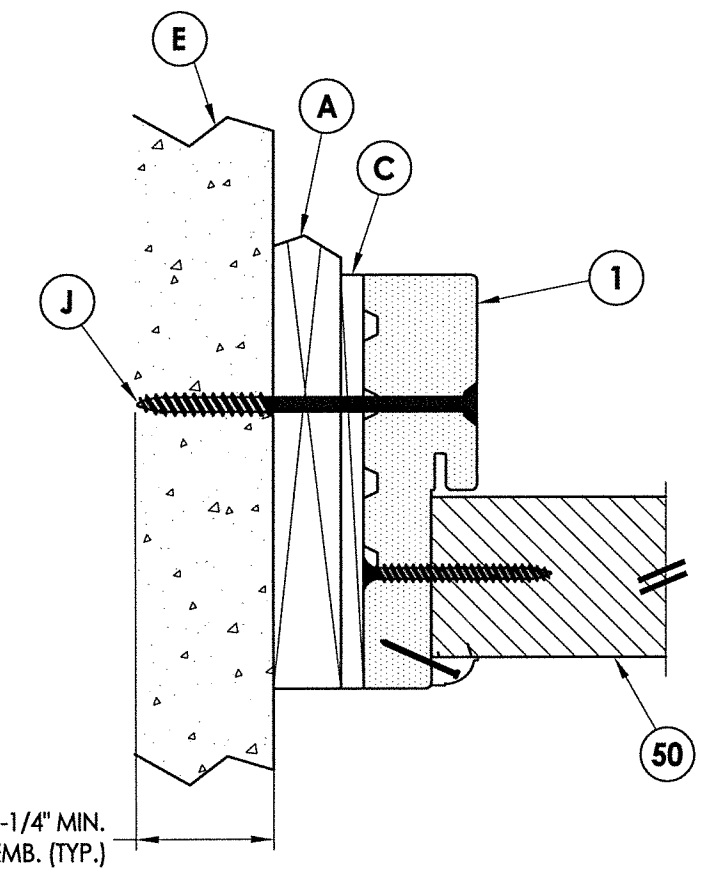
**1** VERTICAL CROSS SECTION  
**4** Outswing shown (Inswing similar)



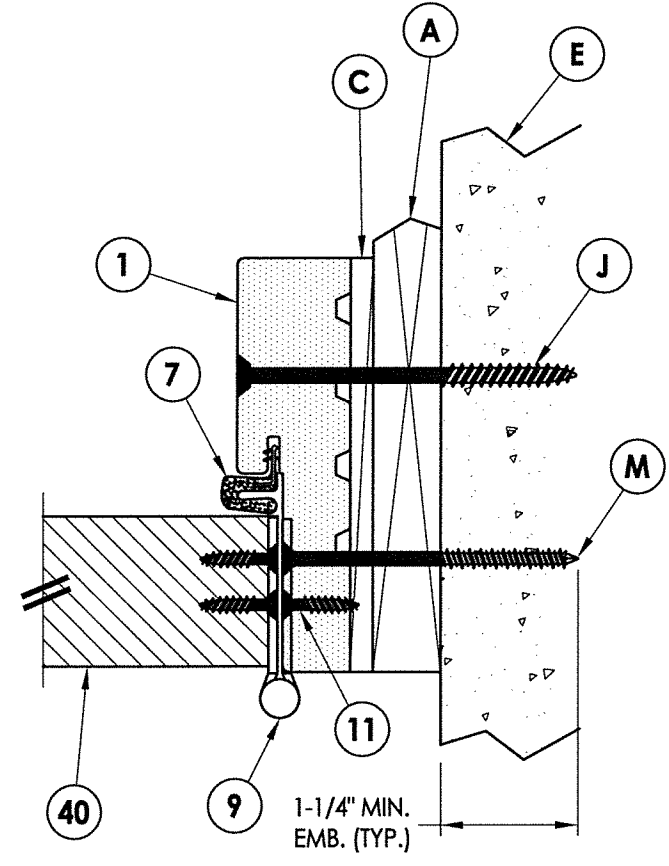
**2** VERTICAL CROSS SECTION  
**4** Outswing shown (Inswing similar)



**3** HORIZONTAL CROSS SECTION  
**4** Outswing shown (Inswing similar)



**4** HORIZONTAL CROSS SECTION  
**4** Outswing shown (Inswing similar)



**5** HORIZONTAL CROSS SECTION  
**4** Outswing shown (Inswing similar)

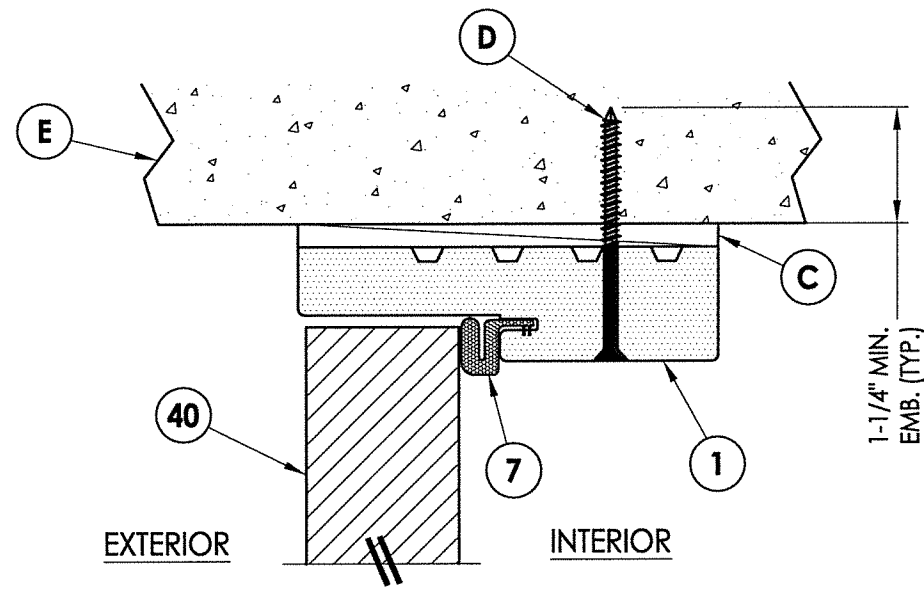
L. F. SCHMIDT  
 LICENSE  
 No. 43409  
 STATE OF FLORIDA  
 PROFESSIONAL ENGINEER

*LFS*  
8-8-22

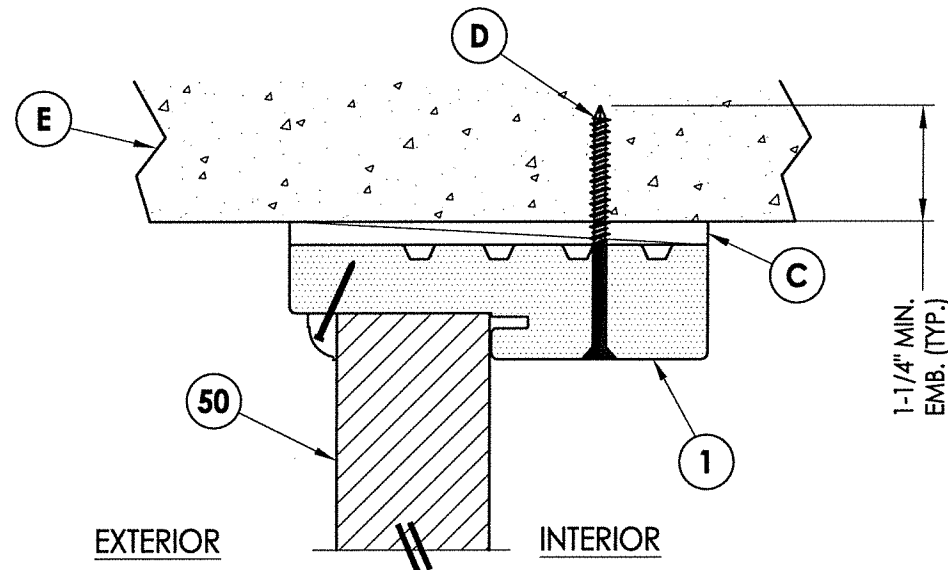
Documents Prepared By:  
 Lyndon F. Schmidt  
 P.E. No. 43409

**RW** BUILDING CONSULTANTS, INC.  
 P.O. Box 230, Valrico, FL 33595  
 Phone No.: 813.659.9197  
 FBPE Registry No. 9813

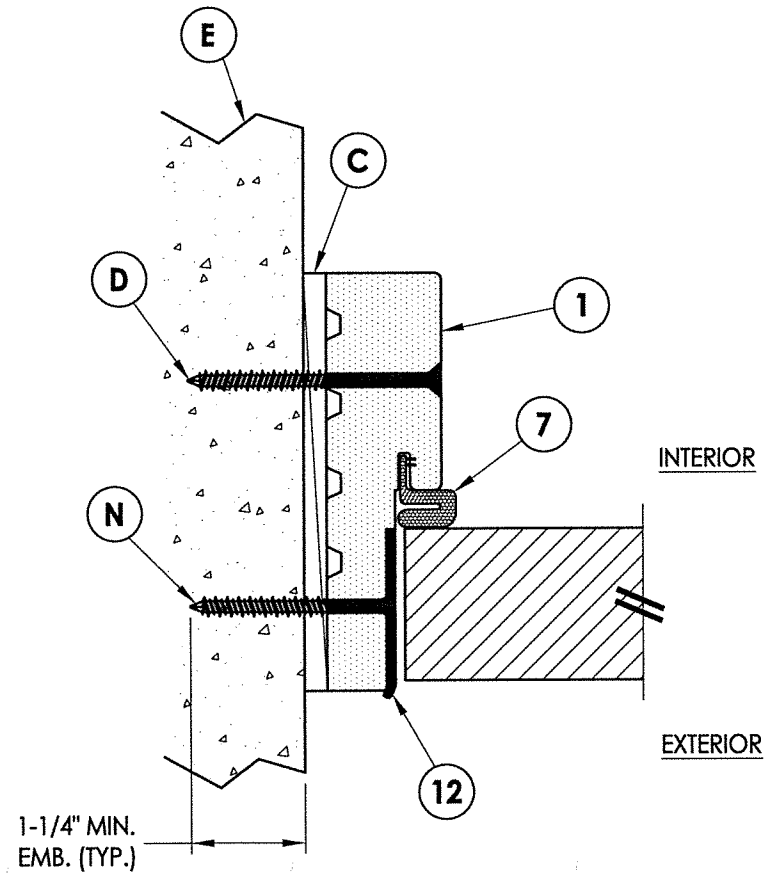
PRODUCT:	BMI COMPONENTS	
PART OR ASSEMBLY:	HORIZONTAL & VERTICAL CROSS SECTIONS (1X BUCK)	
NO.	DATE	BY
REVISIONS		
DATE:	7/05/22	
SCALE:	N.T.S.	
DWG. BY:	LFS	
CHK. BY:	RW	
DRAWING NO.:	FL-41560.2	
SHEET	4 OF 10	



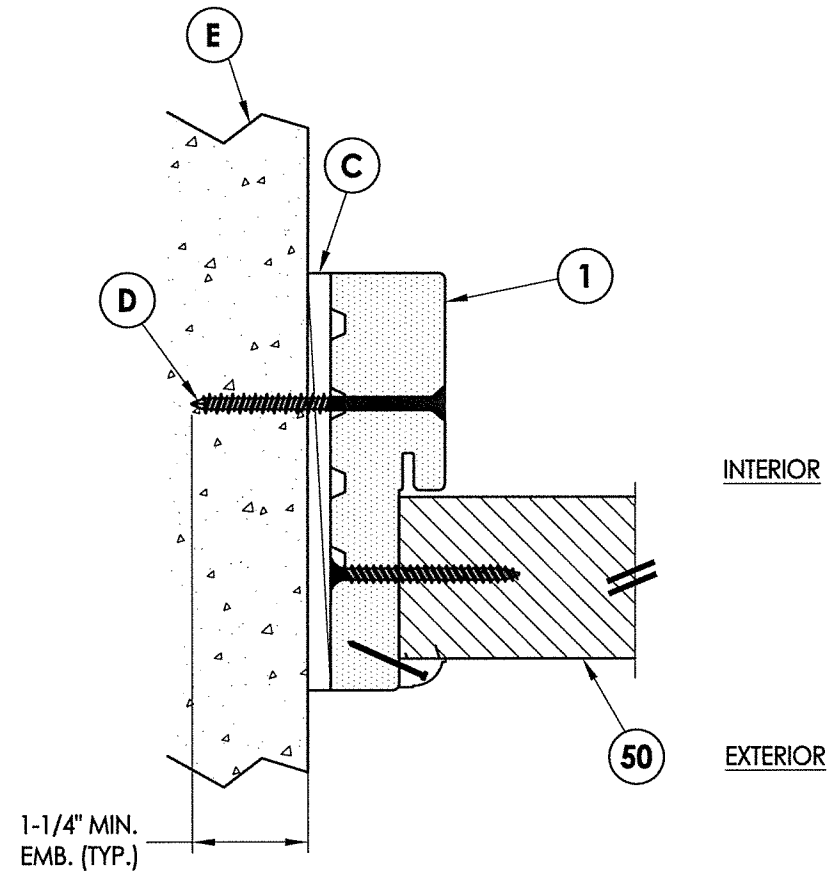
**1** VERTICAL CROSS SECTION  
**5** Outswing shown (Inswing similar)



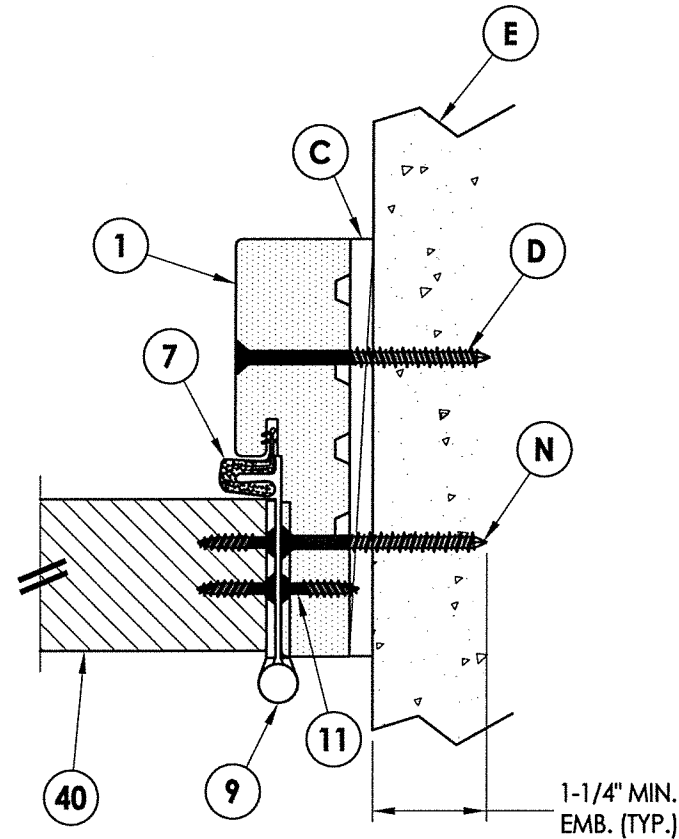
**2** VERTICAL CROSS SECTION  
**5** Outswing shown (Inswing similar)



**3** HORIZONTAL CROSS SECTION  
**5** Outswing shown (Inswing similar)



**4** HORIZONTAL CROSS SECTION  
**5** Outswing shown (Inswing similar)



**5** HORIZONTAL CROSS SECTION  
**5** Outswing shown (Inswing similar)

**E. SCHMIDT**  
 LICENSE  
 No. 43409  
 STATE OF  
 FLORIDA  
 PROFESSIONAL ENGINEER

*LFS*  
 8.8.22

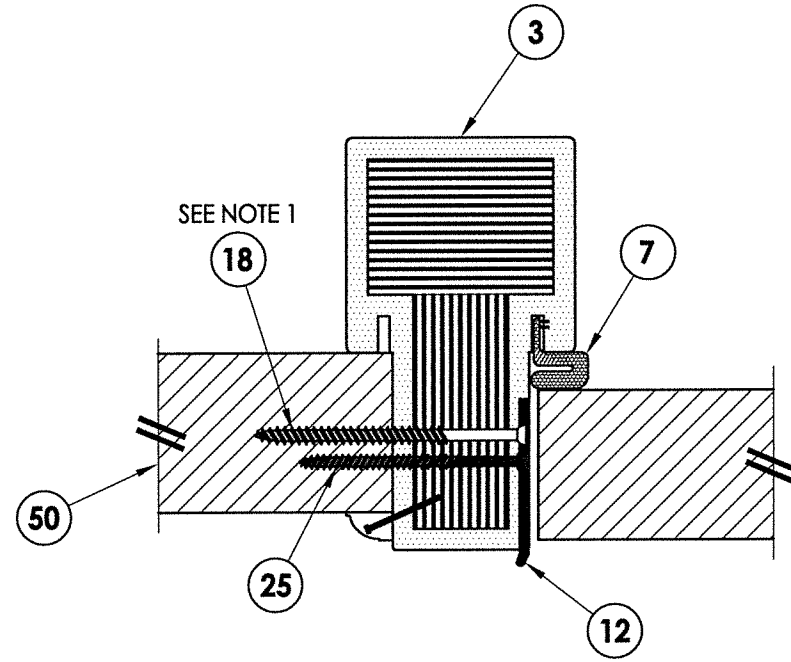
Documents Prepared By:  
 Lyndon F. Schmidt  
 P.E. No. 43409

**RW**  
 BUILDING CONSULTANTS, INC.  
 P.O. Box 230, Valrico, FL 33595  
 Phone No.: 813.659.9197  
 FBPE Registry No. 9813

<p>PRODUCT: BMI COMPONENTS</p> <p>PART OR ASSEMBLY: HORIZONTAL &amp; VERTICAL CROSS SECTIONS (DIRECT TO MASONRY)</p>	<table border="1" style="width: 100%; border-collapse: collapse;"> <thead> <tr> <th style="width: 10%;">NO.</th> <th style="width: 10%;">DATE</th> <th style="width: 10%;">BY</th> <th style="width: 10%;">REVISIONS</th> </tr> </thead> <tbody> <tr> <td> </td> <td> </td> <td> </td> <td> </td> </tr> <tr> <td> </td> <td> </td> <td> </td> <td> </td> </tr> <tr> <td> </td> <td> </td> <td> </td> <td> </td> </tr> <tr> <td> </td> <td> </td> <td> </td> <td> </td> </tr> </tbody> </table>	NO.	DATE	BY	REVISIONS																
NO.	DATE	BY	REVISIONS																		
<p>DATE: 7/05/22</p> <p>SCALE: N.T.S.</p> <p>DWG. BY: LFS</p> <p>CHK. BY: RW</p> <p>DRAWING NO.: FL-41560.2</p> <p>SHEET <u>5</u> OF <u>10</u></p>																					

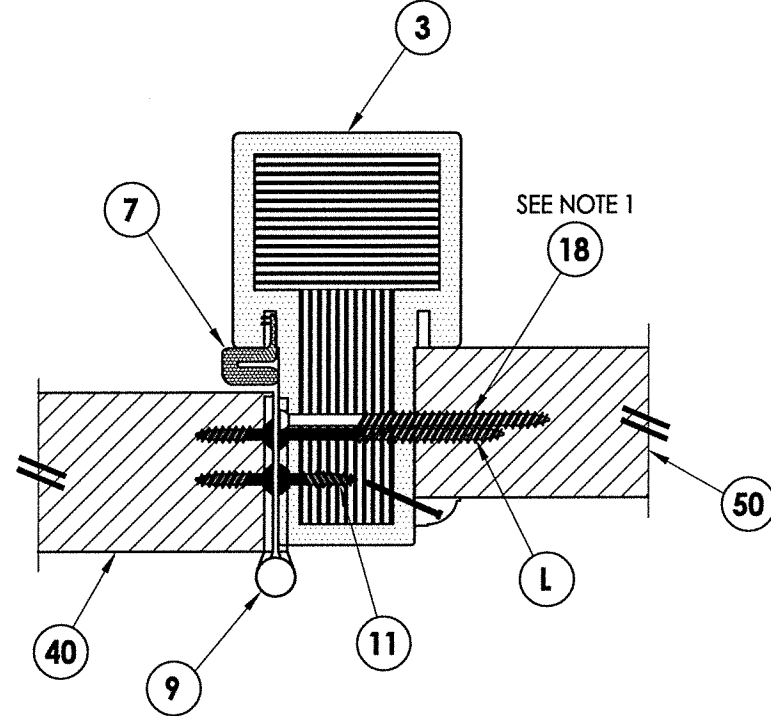
NOTES:

1. Sidelite assembly screws located @ 3" & 19" from each end of mullion (4 total).



**1** HORIZONTAL CROSS SECTION  
**6** Inswing shown (Outswing similar)

EXTERIOR



**2** HORIZONTAL CROSS SECTION  
**6** Inswing shown (Outswing similar)

INTERIOR

**L. F. SCHMIDT**  
 LICENSE No. 43409

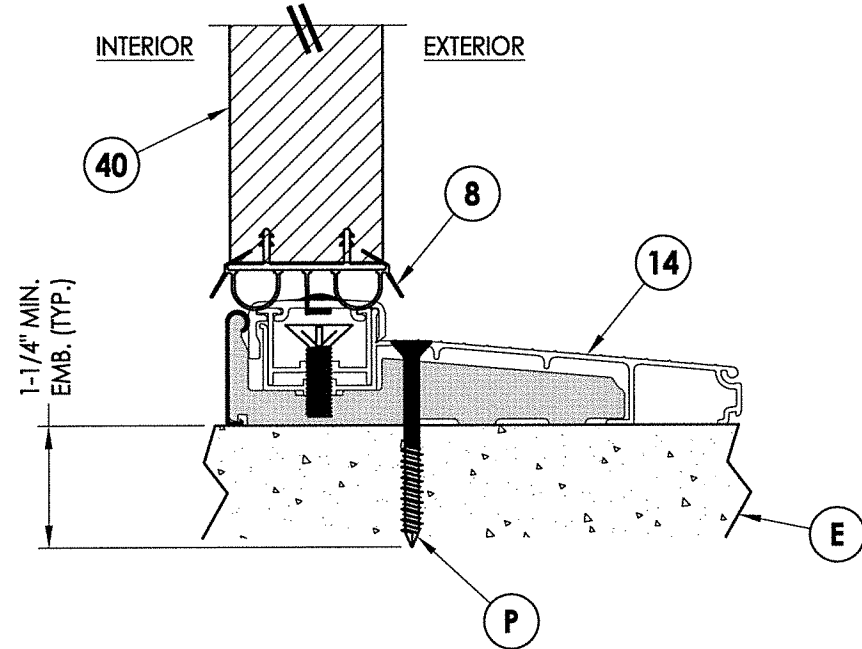
★  
 STATE OF FLORIDA  
 PROFESSIONAL ENGINEER

*LFS*  
*P.F. 22*

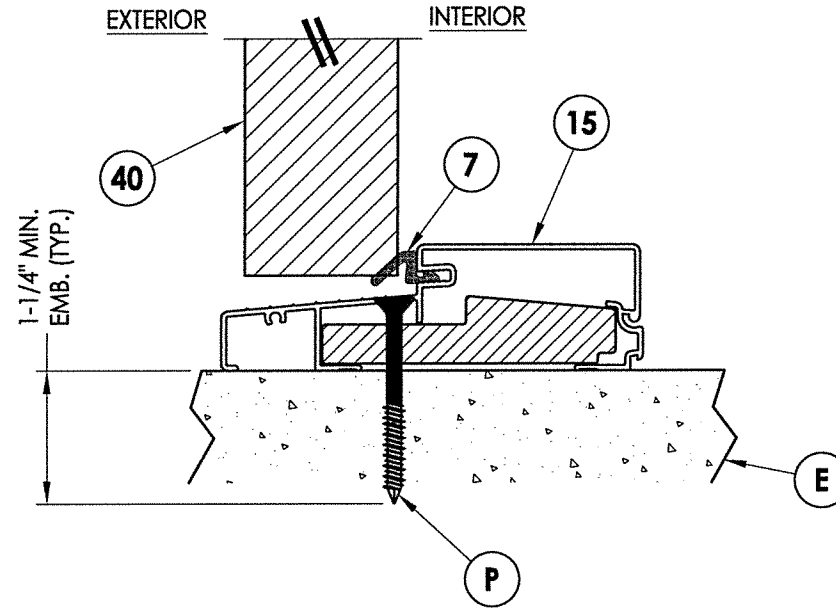
Documents Prepared By:  
 Lyndon F. Schmidt  
 P.E. No. 43409

**RW** BUILDING CONSULTANTS, INC.  
 P.O. Box 230, Valrico, FL 33595  
 Phone No.: 813.659.9197  
 FBPE Registry No. 9813

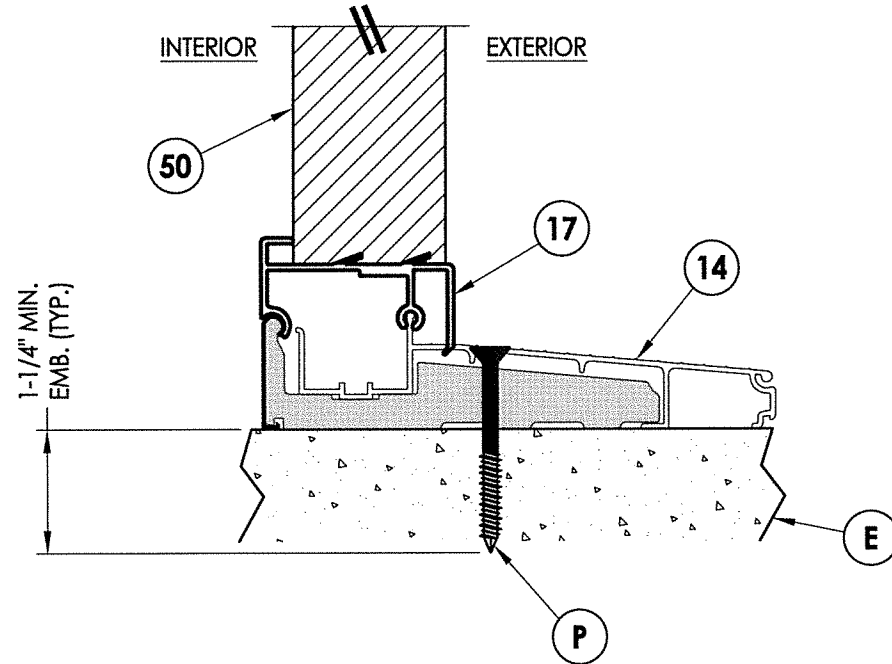
PRODUCT:		BMI COMPONENTS
PART OR ASSEMBLY:		HORIZONTAL CROSS SECTIONS
NO.	DATE	BY
DATE:		7/05/22
SCALE:		N.T.S.
DWG. BY:		LFS
CHK. BY:		RW
DRAWING NO.:		FL-41560.2
SHEET		6 OF 10



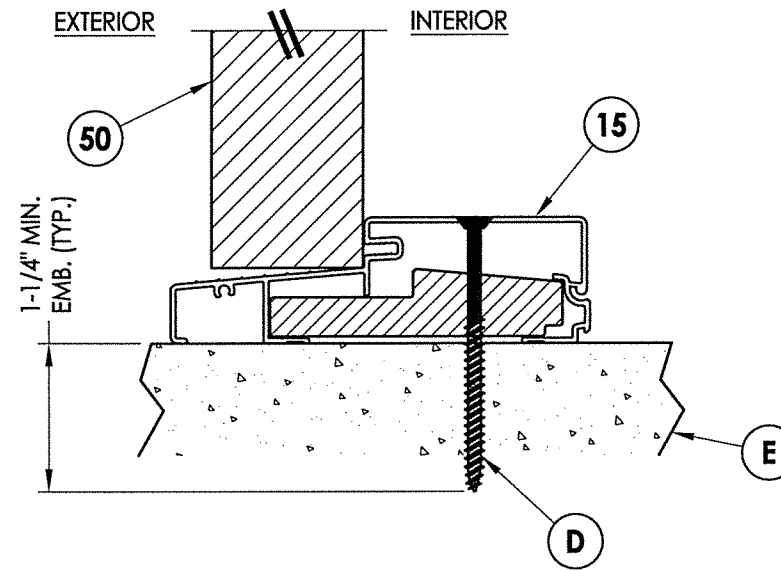
**1** VERTICAL CROSS SECTION  
**7** Inswing Threshold



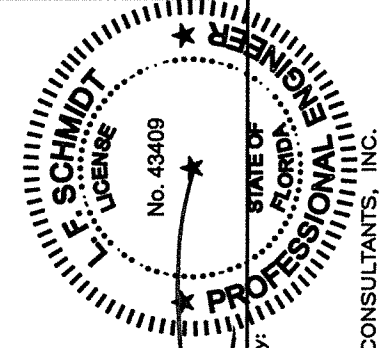
**2** VERTICAL CROSS SECTION  
**7** Outswing Threshold



**3** VERTICAL CROSS SECTION  
**7** Inswing Threshold



**4** VERTICAL CROSS SECTION  
**7** Outswing Threshold



*LFS*  
8.8.22

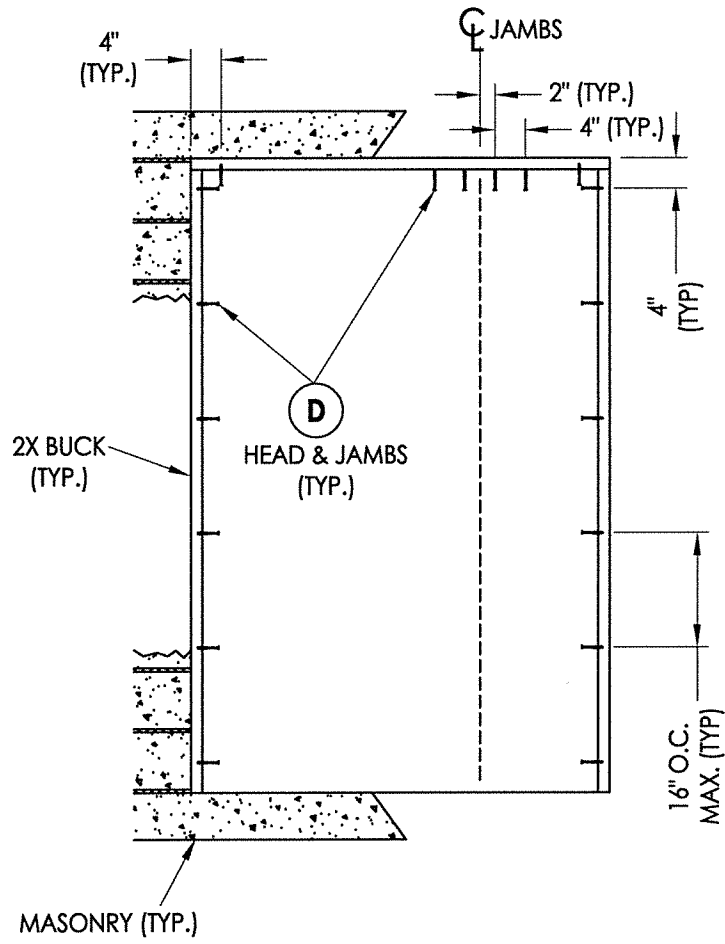
Documents Prepared By:  
Lyndon F. Schmidt  
P.E. No. 43409

**RW** BUILDING CONSULTANTS, INC.  
P.O. Box 230, Valrico, FL 33595  
Phone No.: 813.659.9197  
FBPE Registry No. 9813

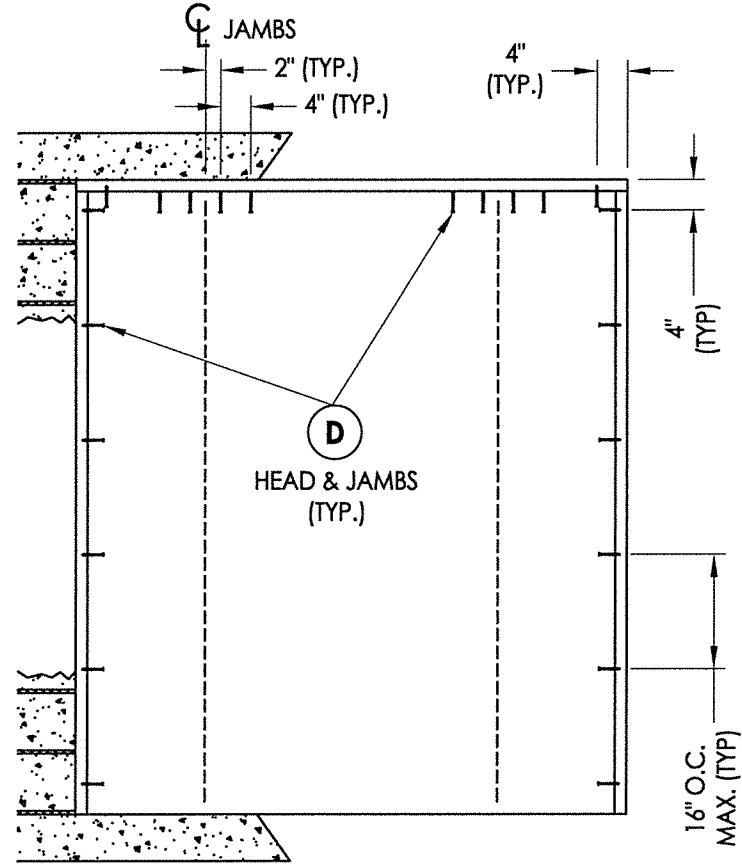
PRODUCT:		BMI COMPONENTS
PART OR ASSEMBLY:		VERTICAL CROSS SECTIONS (THRESHOLDS)

NO.	DATE	BY	REVISIONS

DATE: 7/05/22  
SCALE: N.T.S.  
DWG. BY: LFS  
CHK. BY: RW  
DRAWING NO.: FL-41560.2  
SHEET 7 OF 10

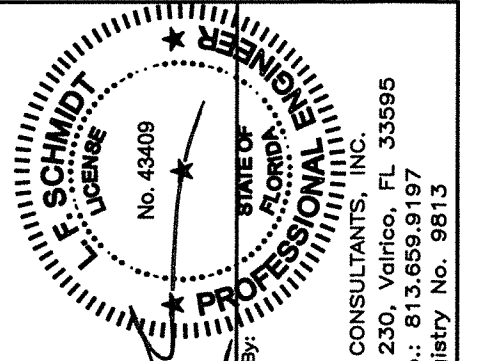


XO, OX



OXO

**2X BUCK ANCHORING**



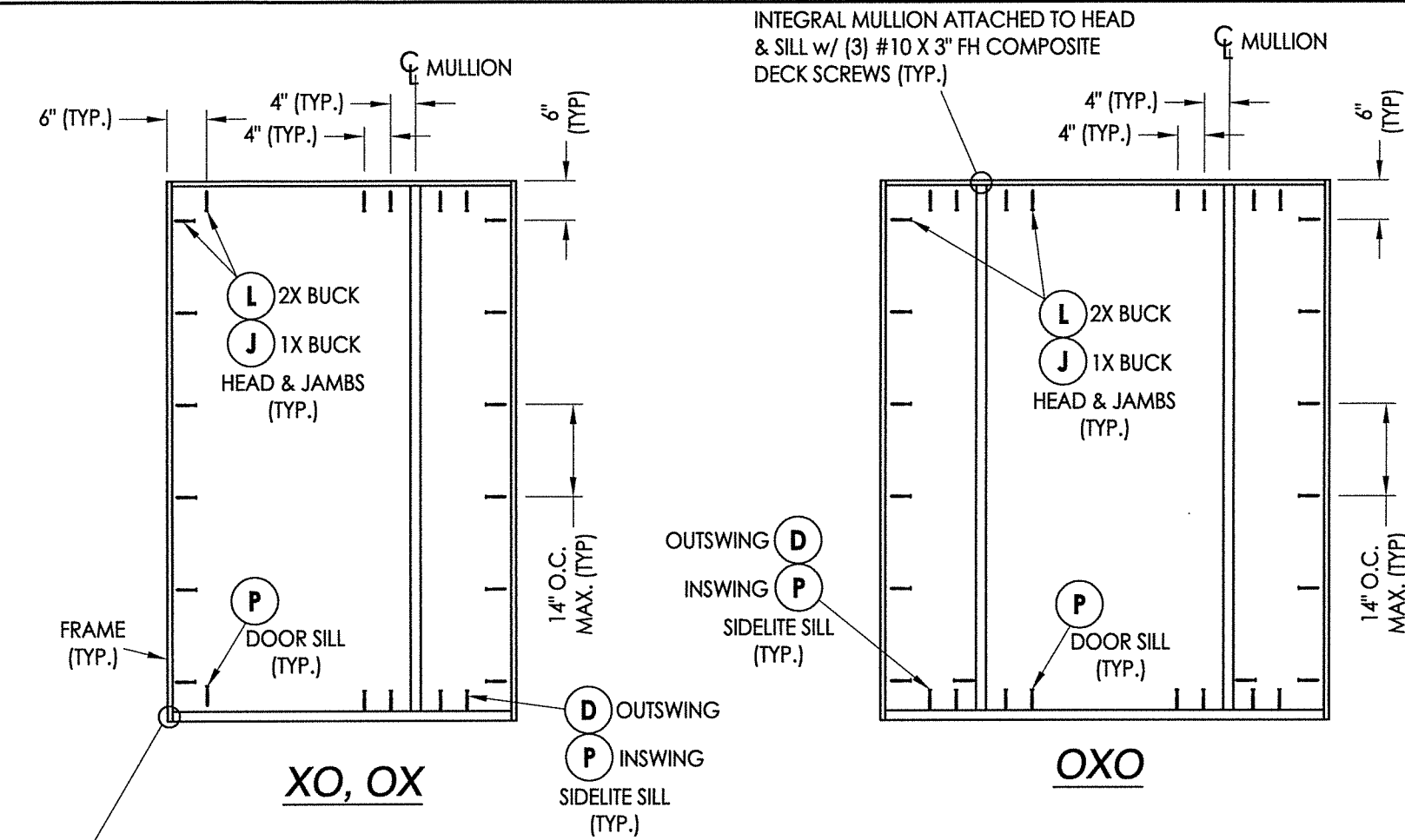
8.8.22  
 Documents Prepared By:  
 Lyndon F. Schmidt  
 P.E. No. 43409  
 R.W.

BUILDING CONSULTANTS, INC.  
 P.O. Box 230, Vairco, FL 33595  
 Phone No.: 813.659.9197  
 FBPE Registry No. 9813

PRODUCT:	BMI COMPONENTS	
PART OR ASSEMBLY:	2X BUCK ANCHORING (O/X, X/O, OXO)	
NO.	DATE	BY
REVISIONS		
DATE:	7/05/22	
SCALE:	N.T.S.	
DWG. BY:	LFS	
CHK. BY:	RW	
DRAWING NO.:	FL-41560.2	
SHEET	8	OF 10

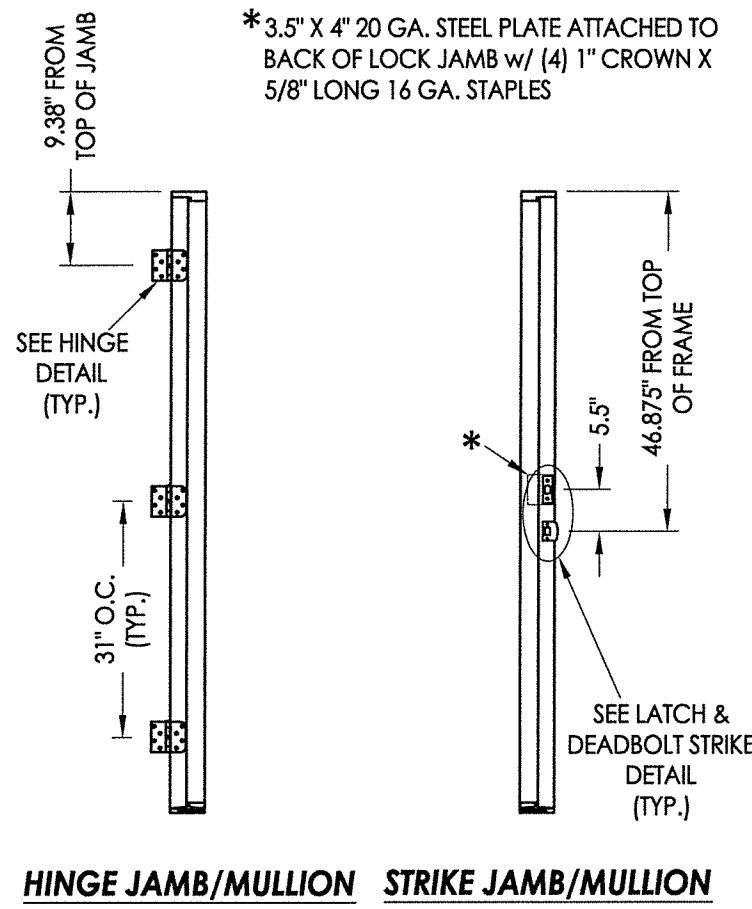


Z:\Clients\BM\VA - Florida Product Approvals\FL-41560\C - Drawings\FL 41560 (2020)\FL-41560.2.dwg

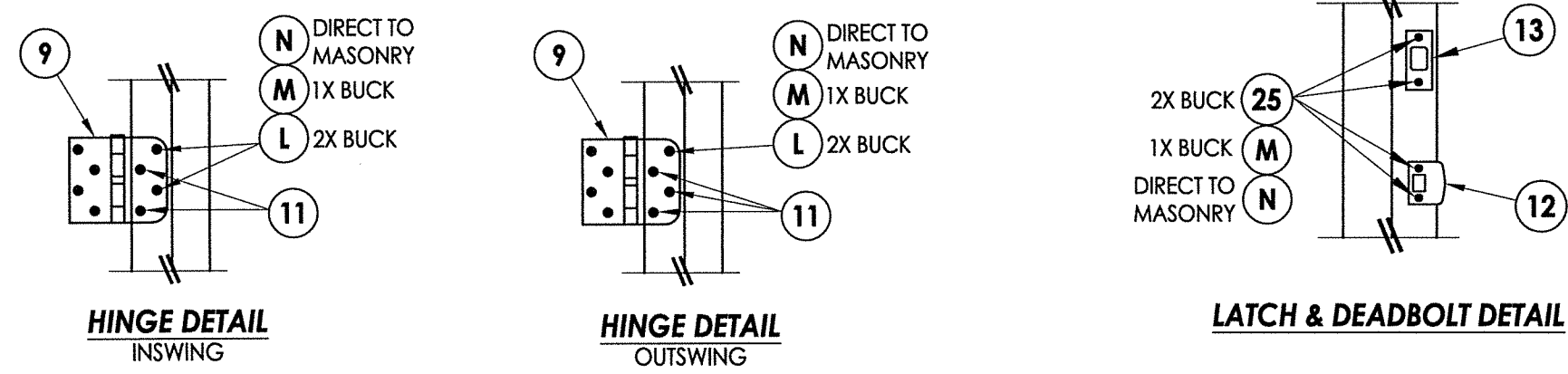


**FRAME ANCHORING**

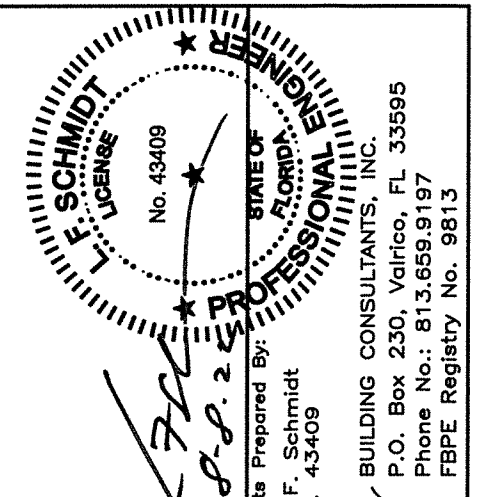
FRAME CORNERS ATTACHED w/ (3) 7/16" CROWN X 1-1/2" LONG 16 GA. STAPLES & (2) #7 X 2" DRYWALL SCREWS @ HEAD & SILL (TYP.)



**HINGE JAMB/MULLION STRIKE JAMB/MULLION**



**HARDWARE DETAILS**



Documents Prepared By:  
Lyndon F. Schmidt  
P.E. No. 43409  
R.W. BUILDING CONSULTANTS, INC.  
P.O. Box 230, Valrico, FL 33595  
Phone No.: 813.659.9197  
FBPE Registry No. 9813

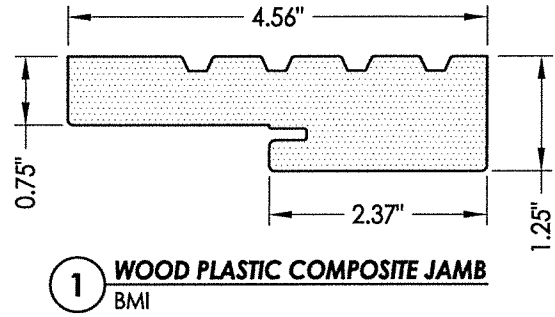
PRODUCT:	BMI COMPONENTS
PART OR ASSEMBLY:	FRAME ANCHORING & HARDWARE DETAILS

NO.	DATE	BY	REVISIONS

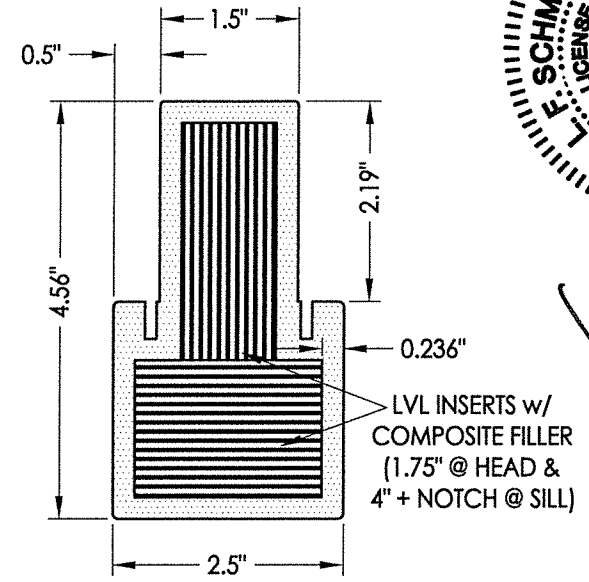
DATE:	7/05/22
SCALE:	N.T.S.
DWG. BY:	LFS
CHK. BY:	RW
DRAWING NO.:	FL-41560.2
SHEET	9 OF 10

Z:\Clients\BMVA - Florida Product Approvals\FL-41560\C - Drawings\FL-41560 (2020)\FL-41560.2.dwg

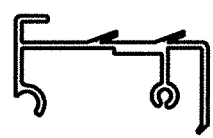
BILL OF MATERIALS		
ITEM #	DESCRIPTION	MATERIAL
A	1X BUCK (SG >= 0.42)	WOOD
B	2X BUCK (SG >= 0.42)	WOOD
C	1/4" MAX. SHIM SPACE	-
D	1/4" X 2-3/4" PFH DeWALT OR ITW CONCRETE SCREW	STEEL
E	MASONRY - 3,000 PSI MIN. CONCRETE CONFORMING TO ACI 301 OR HOLLOW BLOCK CONFORMING TO ASTM C90	CONCRETE
J	1/4" X 3-3/4" PFH DeWALT OR ITW CONCRETE SCREW	STEEL
L	#10 X 2-1/2" PFH WOOD SCREW (1.15" MIN. EMBEDMENT)	STEEL
M	3/16" X 3-1/4" PFH ITW CONCRETE SCREW	STEEL
N	3/16" X 2-1/4" PFH ITW CONCRETE SCREW	STEEL
P	1/4" X 2-1/4" PFH DeWALT OR ITW CONCRETE SCREW	STEEL
1	HEAD & SIDE JAMB (BMI WPC)	COMPOSITE
3	MULLION (BMI WPC)	COMPOSITE
7	WEATHERSTRIP	FOAM
9	4" X 4" HINGE	STEEL
11	#9 X 3/4" PFH WOOD SCREW	STEEL
12	LATCH STRIKE PLATE	STEEL
13	DEADBOLT STRIKE PLATE	STEEL
14	INSWING THRESHOLD	ALUM/COMP
15	OUTSWING THRESHOLD	ALUM/COMP
17	INSWING SIDELITE ADAPTER	PVC
18	#8 X 3" SD TRIM SCREW	STEEL
25	#8 X 2-1/2" PFH WOOD SCREW	STEEL
40	DOOR PANEL (BY OTHERS - SEE GENERAL NOTE 4, SHEET 1)	-
50	SIDELITE PANEL (BY OTHERS - SEE GENERAL NOTE 4, SHEET 1)	-



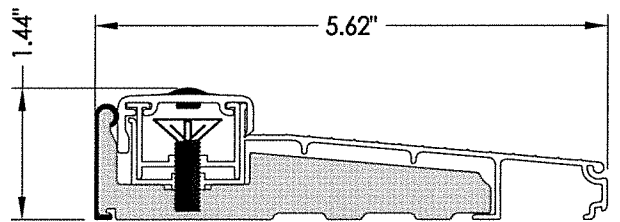
1 WOOD PLASTIC COMPOSITE JAMB  
BMI



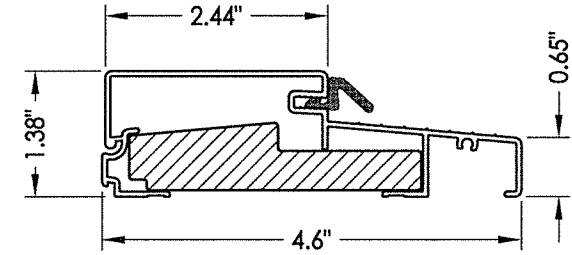
3 WOOD PLASTIC COMPOSITE MULLION  
BMI



17 INSWING SIDELITE SPACER  
Columbia



14 INSWING THRESHOLD  
Columbia



15 OUTSWING THRESHOLD  
Columbia

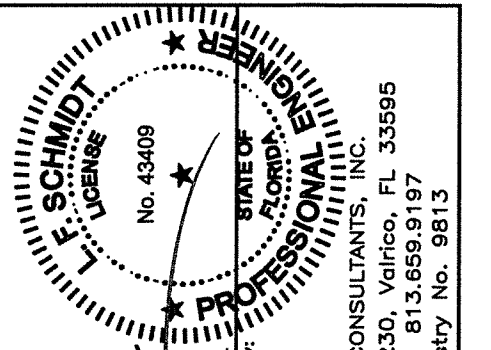
**CONCRETE ANCHOR NOTES:**

- Concrete anchor locations at the corners may be adjusted to maintain the min. edge distance to mortar joints.
- Concrete anchor locations noted as "MAX. ON CENTER" must be adjusted to maintain the min. edge distance to mortar joints, additional concrete anchors may be required to ensure the "MAX. ON CENTER" dimension are not exceeded.
- Concrete anchor table:

ANCHOR TYPE	ANCHOR SIZE	MIN. EMBEDMENT	MIN. CLEARANCE TO MASONRY EDGE	MIN. CLEARANCE TO ADJACENT ANCHOR
ITW TAPCON®	3/16"	1-1/4"	3"	1-1/2"
ITW TAPCON®	1/4"	1-1/4"	2"	4"
DeWALT ULTRACON®	1/4"	1-1/4"	1"	4"

**WOOD SCREW INSTALLATION NOTES:**

- Maintain a minimum 5/8" edge distance, 1" end distance, & 1" o.c. spacing of wood screws to prevent the splitting of wood.



Documents Prepared By:  
Lyndon F. Schmidt  
P.E. No. 43409

R.W. BUILDING CONSULTANTS, INC.  
P.O. Box 230, Valrico, FL 33595  
Phone No.: 813.659.9197  
FBPE Registry No. 9813

PRODUCT:	BMI COMPONENTS
PART OR ASSEMBLY:	BILL OF MATERIALS & COMPONENTS
DATE:	7/05/22
SCALE:	N.T.S.
DWG. BY:	LFS
CHK. BY:	RW
DRAWING NO.:	FL-41560.2
SHEET	10 OF 10