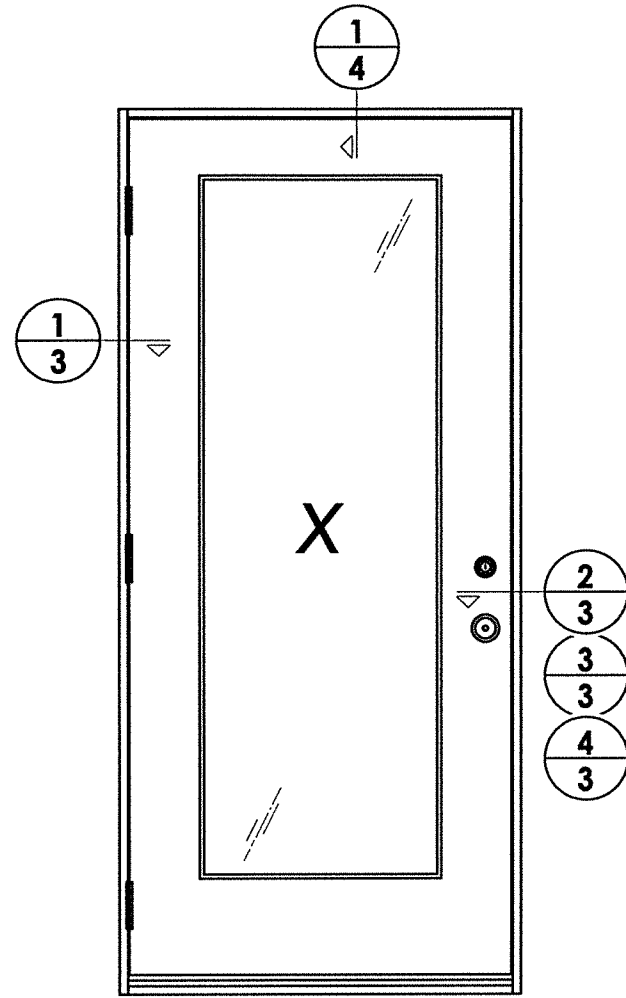
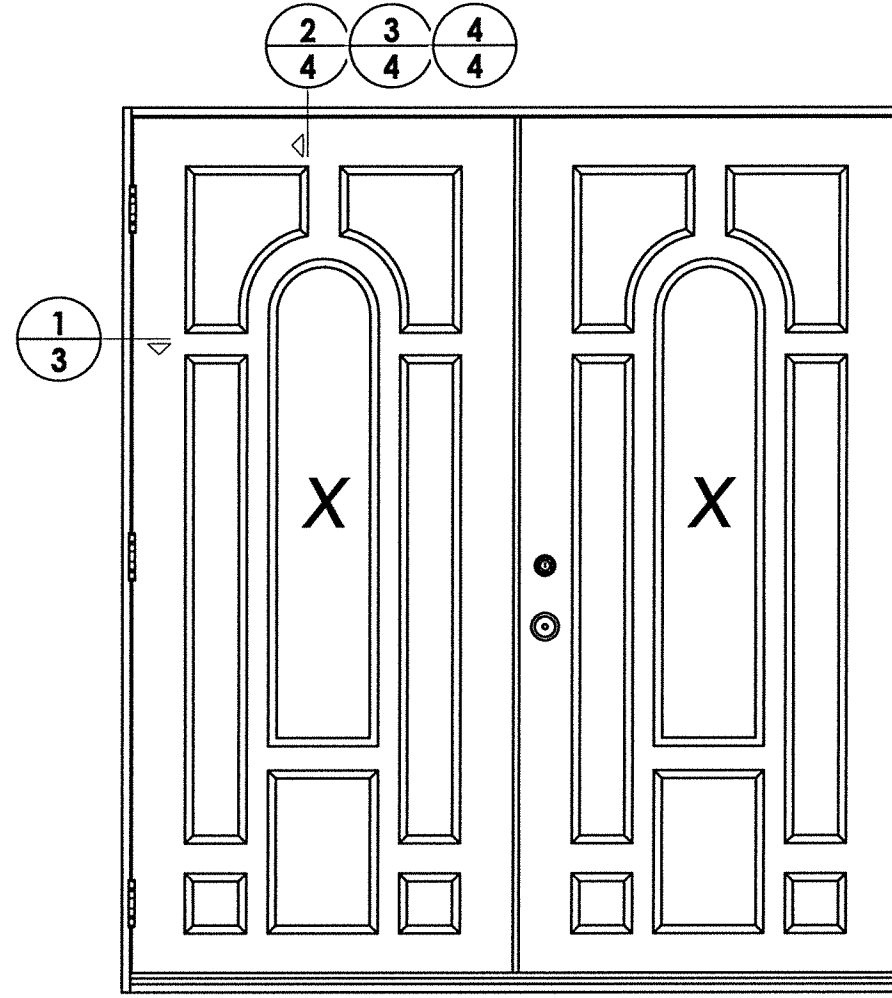




Z:\Clients\BMIVA - Florida Product Approvals\FL-41560\C - Drawings\FL-41560 (2020)\FL-41560.1.dwg

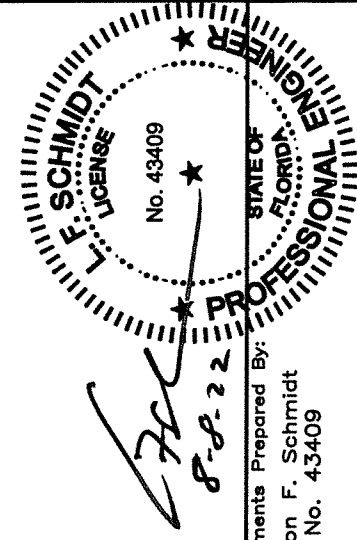


SINGLE DOOR ELEVATION



DOUBLE DOOR ELEVATION

**NOTE:**  
SEE SEPARATE SIDE-HINGED DOOR FLORIDA PRODUCT APPROVAL FOR DOOR CONSTRUCTION DETAILS NOT SHOWN, INCLUDING LOCK HARDWARE, HINGE, ASTRAGAL & THRESHOLD CONNECTIONS.

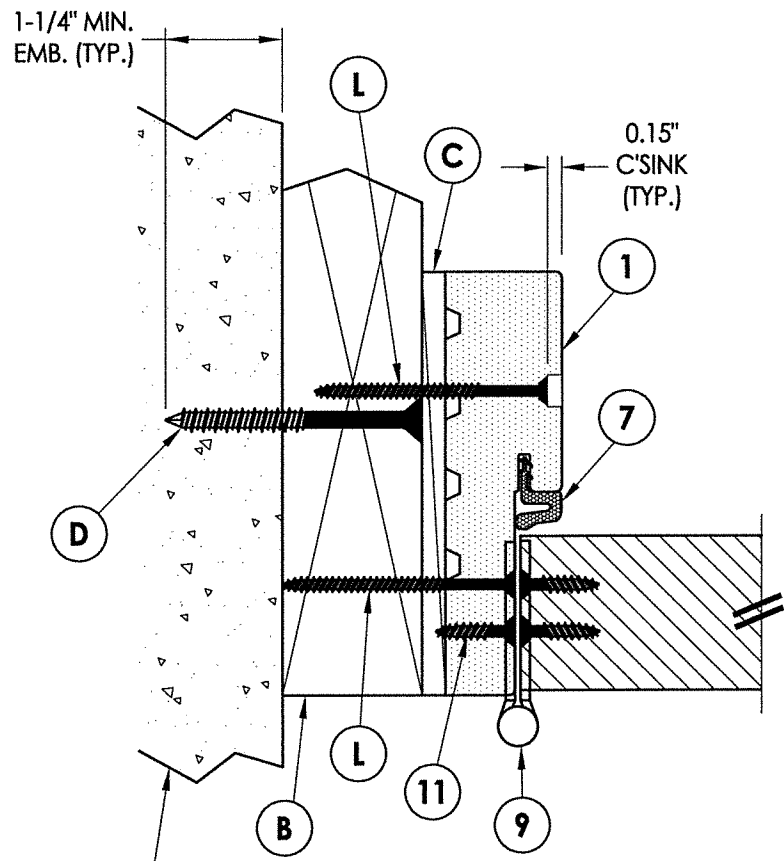


Documents Prepared By:  
Lyndon F. Schmidt  
P.E. No. 43409  
**RW**  
BUILDING CONSULTANTS, INC.  
P.O. Box 230, Valrico, FL 33595  
Phone No.: 813.659.9197  
FBPE Registry No. 9813

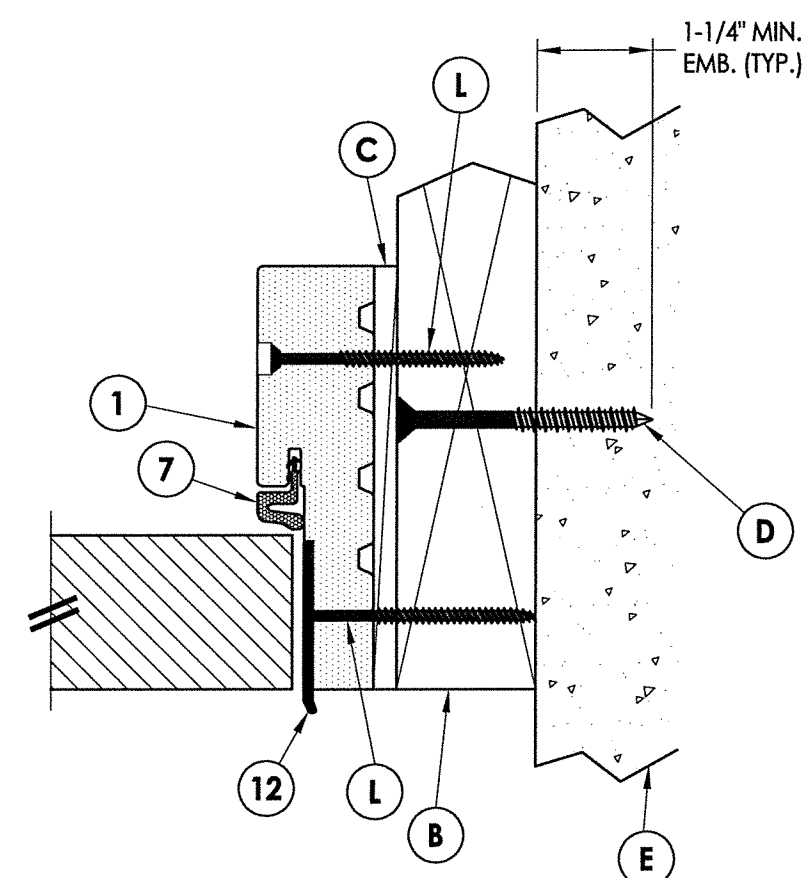
PRODUCT: BMI COMPONENTS  
PART OR ASSEMBLY: ELEVATIONS

NO.	DATE	BY	REVISIONS

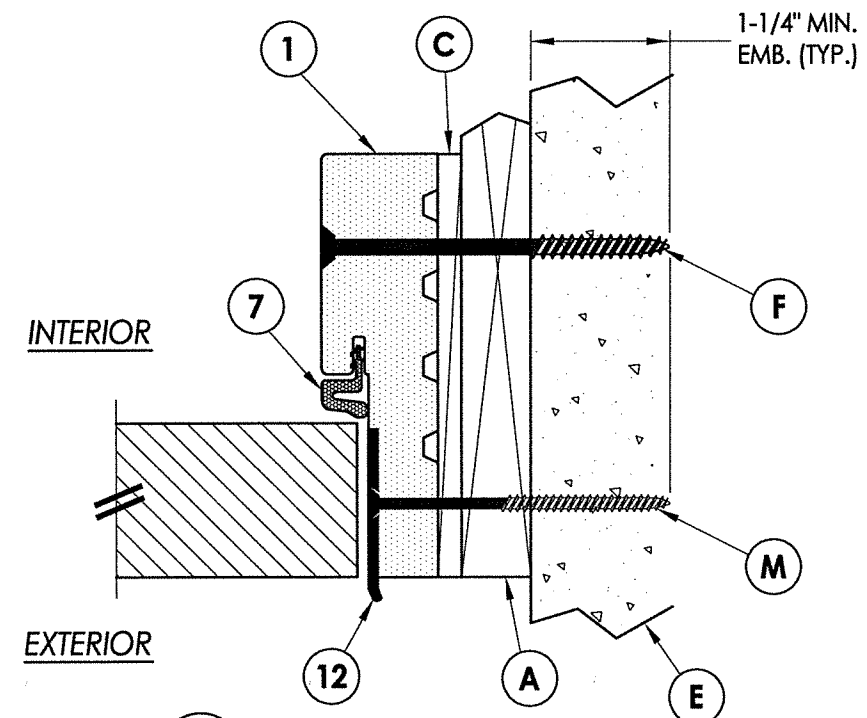
DATE: 7/05/22  
SCALE: N.T.S.  
DWG. BY: LFS  
CHK. BY: RW  
DRAWING NO.: FL-41560.1  
SHEET 2 OF 7



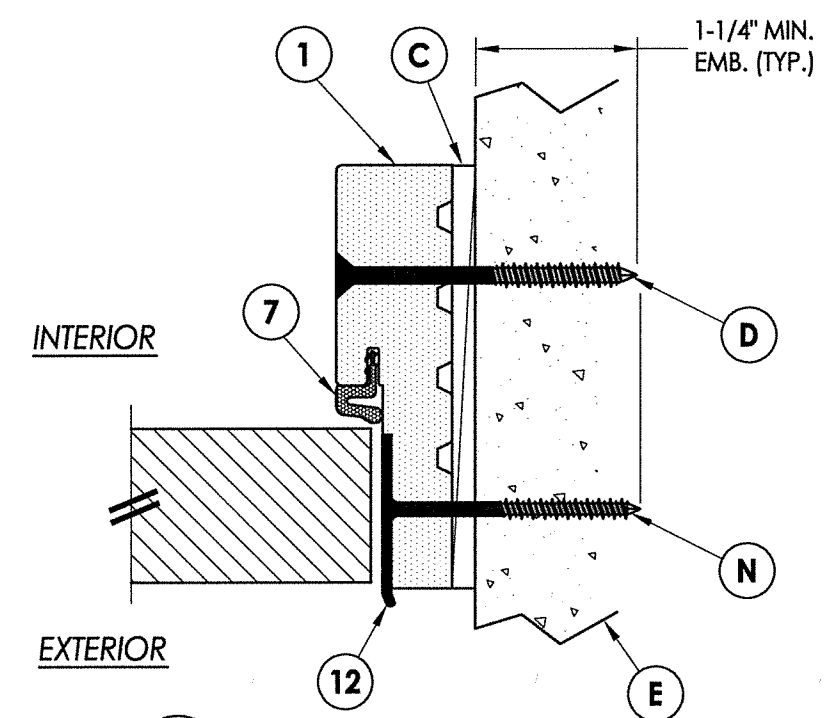
**1**  
**3** **HORIZONTAL CROSS SECTION**  
2X Buck Construction  
Outswing Shown (Inswing Similar)



**2**  
**3** **HORIZONTAL CROSS SECTION**  
2X Buck Construction  
Outswing Shown (Inswing Similar)



**3**  
**3** **HORIZONTAL CROSS SECTION**  
Shown w/1X Buck  
Outswing Shown (Inswing Similar)



**4**  
**3** **HORIZONTAL CROSS SECTION**  
Shown Direct to Masonry  
Outswing Shown (Inswing Similar)

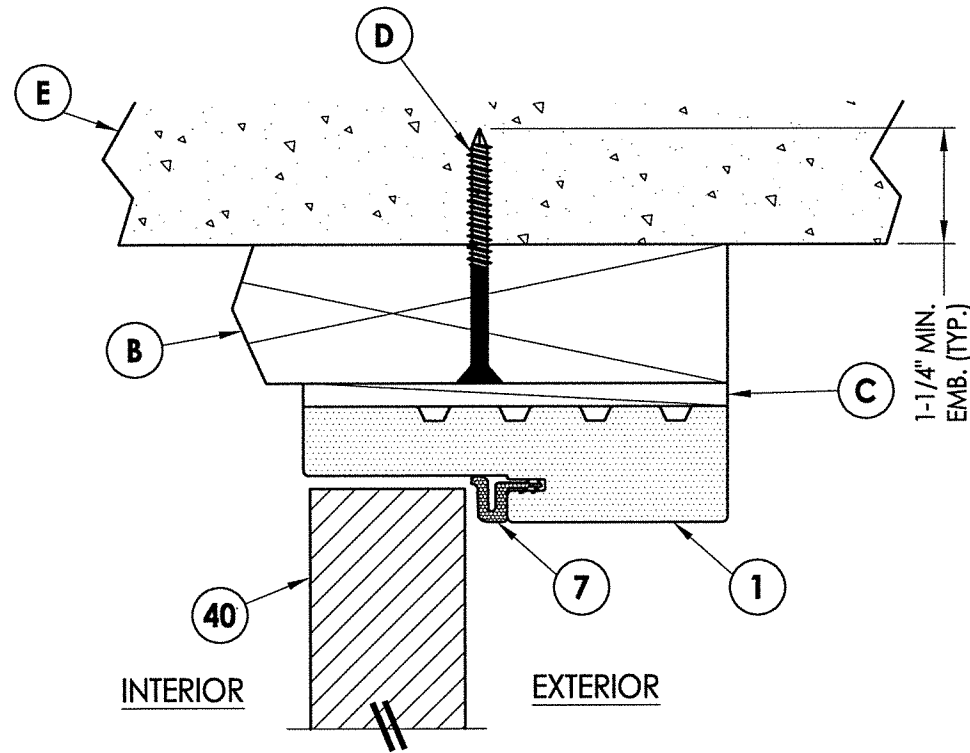
**Professional Engineer**  
F. SCHMIDT  
LICENSE  
No. 43409  
8-8-22

Documents Prepared By:  
Lyndon F. Schmidt  
P.E. No. 43409

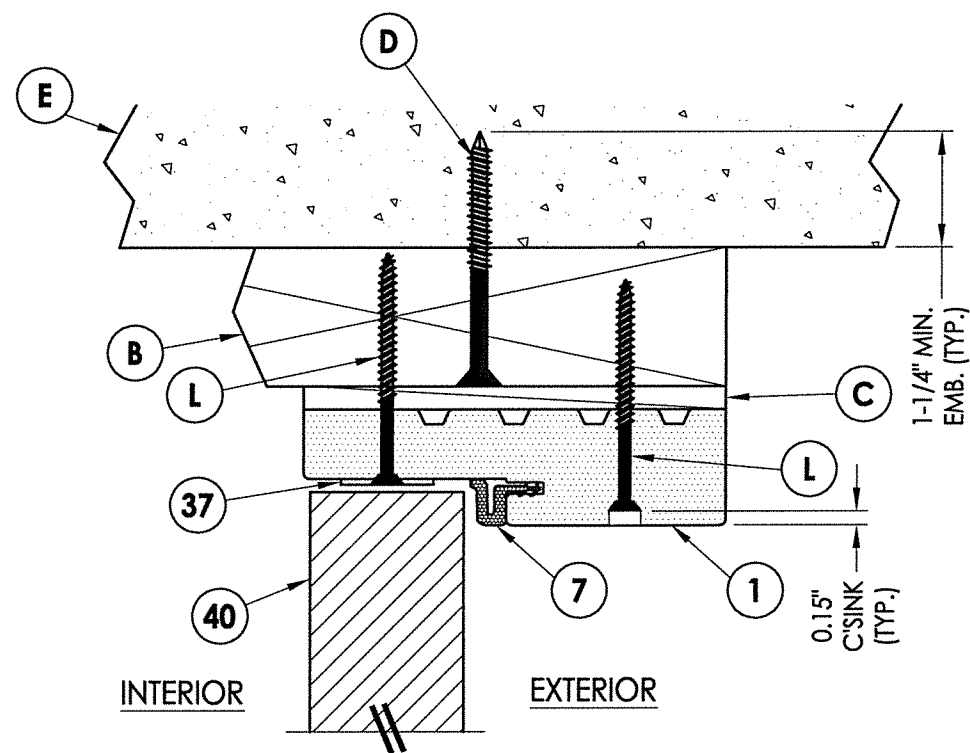
**Professional Engineer**  
STATE OF FLORIDA  
R.W.  
BUILDING CONSULTANTS, INC.  
P.O. Box 230, Valrico, FL 33595  
Phone No.: 813.659.9197  
FBPE Registry No. 9813

PRODUCT:		BMI COMPONENTS
PART OR ASSEMBLY:		HORIZONTAL CROSS SECTIONS
NO.	DATE	BY
REVISIONS		
DATE: 7/05/22		
SCALE: N.T.S.		
DWG. BY: LFS		
CHK. BY: RW		
DRAWING NO.: FL-41560.1		
SHEET 3 OF 7		

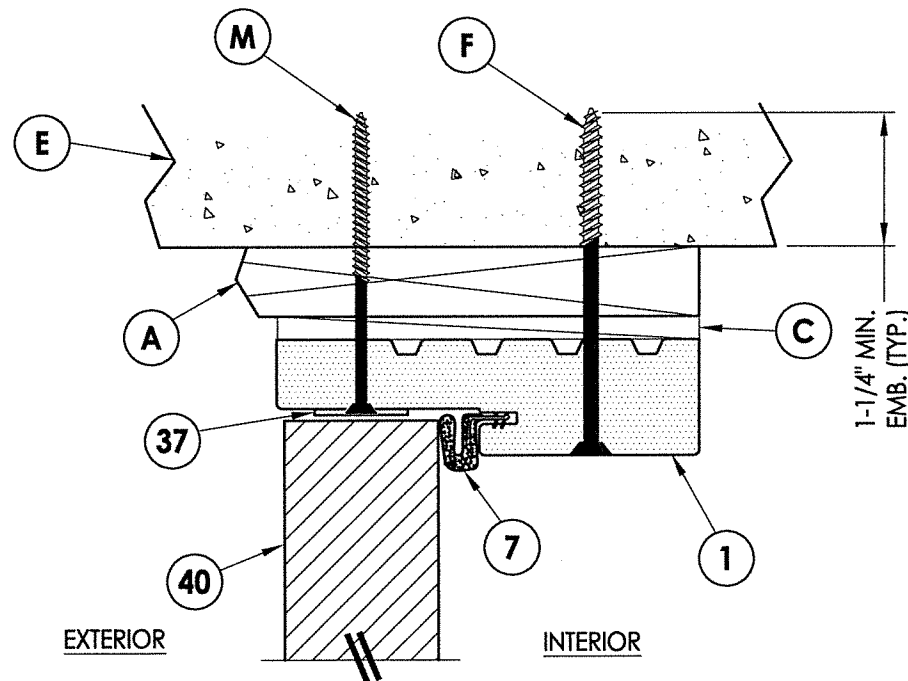
Z:\Clients\BMVA - Florida Product Approvals\FL-41560\C - Drawings\FL-41560 (2020)\FL-41560.1.dwg



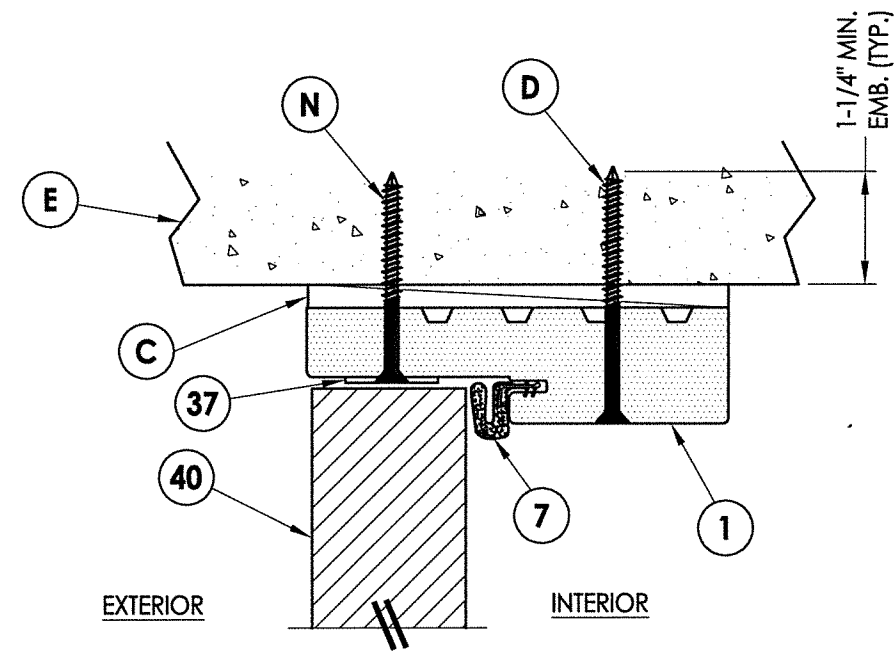
**1**  
**4** **VERTICAL CROSS SECTION**  
2X Buck Construction - Single Door  
Inswing Shown (Outswing Similar)



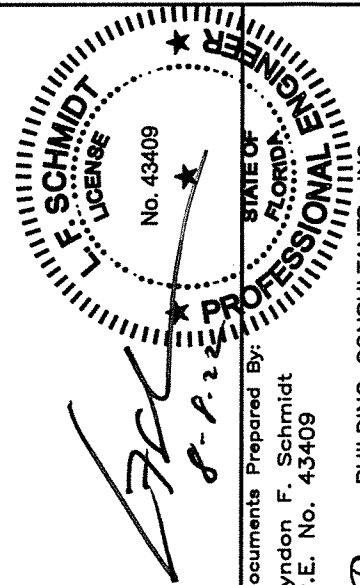
**2**  
**4** **VERTICAL CROSS SECTION**  
2X Buck Construction - Double Door  
Inswing Shown (Outswing Similar)



**3**  
**4** **VERTICAL CROSS SECTION**  
Shown w/ 1X Buck  
Outswing shown (Inswing similar)



**4**  
**4** **VERTICAL CROSS SECTION**  
Shown Direct to Masonry  
Outswing shown (Inswing similar)



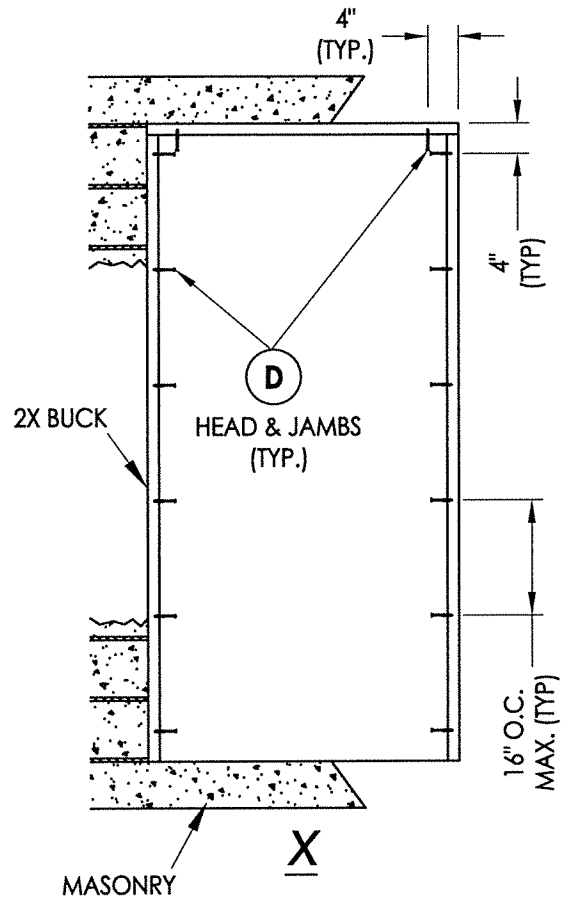
Documents Prepared By:  
Lyndon F. Schmidt  
P.E. No. 43409

**R.W.** BUILDING CONSULTANTS, INC.  
P.O. Box 230, Valrico, FL 33595  
Phone No.: 813.659.9197  
FBPE Registry No. 9813

PRODUCT:	BMI COMPONENTS
PART OR ASSEMBLY:	VERTICAL CROSS SECTIONS

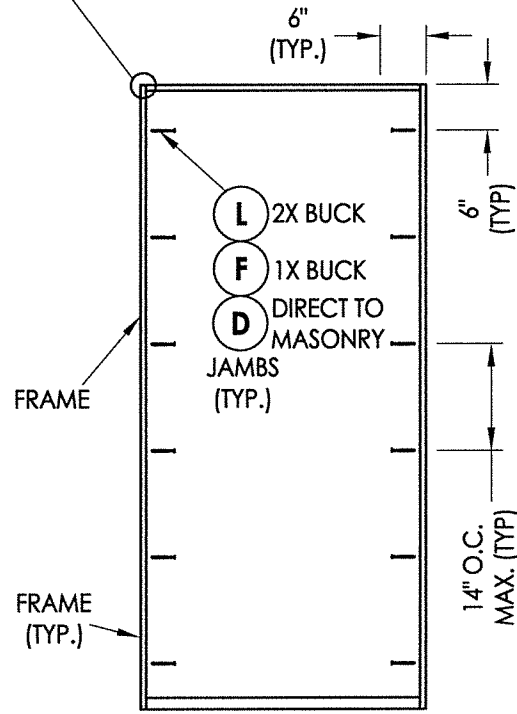
NO.	DATE	BY	REVISIONS

DATE:	7/05/22
SCALE:	N.T.S.
DWG. BY:	LFS
CHK. BY:	RW
DRAWING NO.:	FL-41560.1
SHEET	4 OF 7

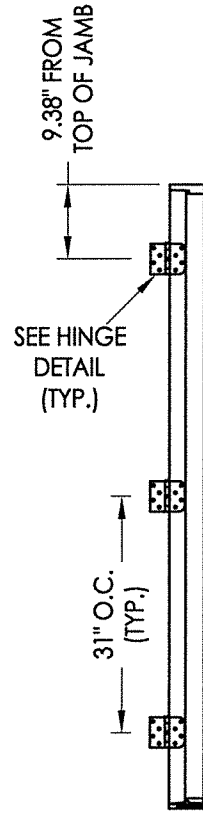


**2X BUCK ANCHORING**

FRAME CORNERS ATTACHED w/ (3) 7/16" CROWN X 1-1/2" LONG 16 GA. STAPLES & (2) #7 X 2" DRYWALL SCREWS @ HEAD & SILL (TYP.)

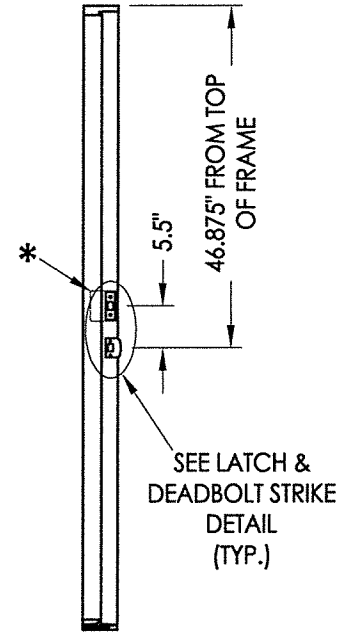


**FRAME ANCHORING**

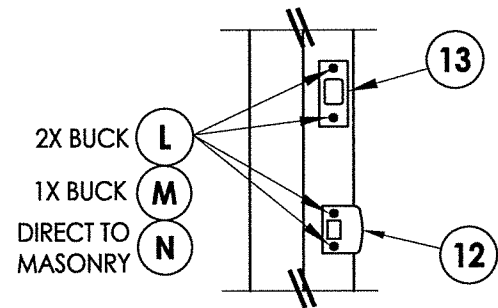


**HINGE JAMB**

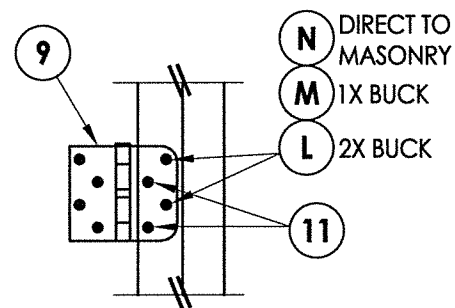
\*3.5" X 4" 20 GA. STEEL PLATE ATTACHED TO BACK OF LOCK JAMB w/ (4) 1" CROWN X 5/8" LONG 16 GA. STAPLES



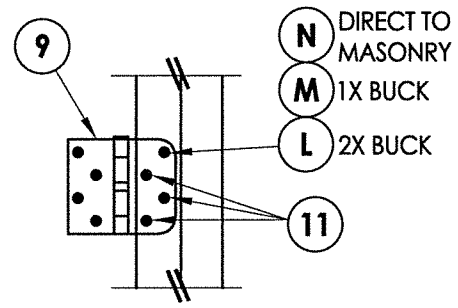
**STRIKE JAMB**



**LOCK HARDWARE**



**HINGE DETAIL INSWING**



**HINGE DETAIL OUTSWING**

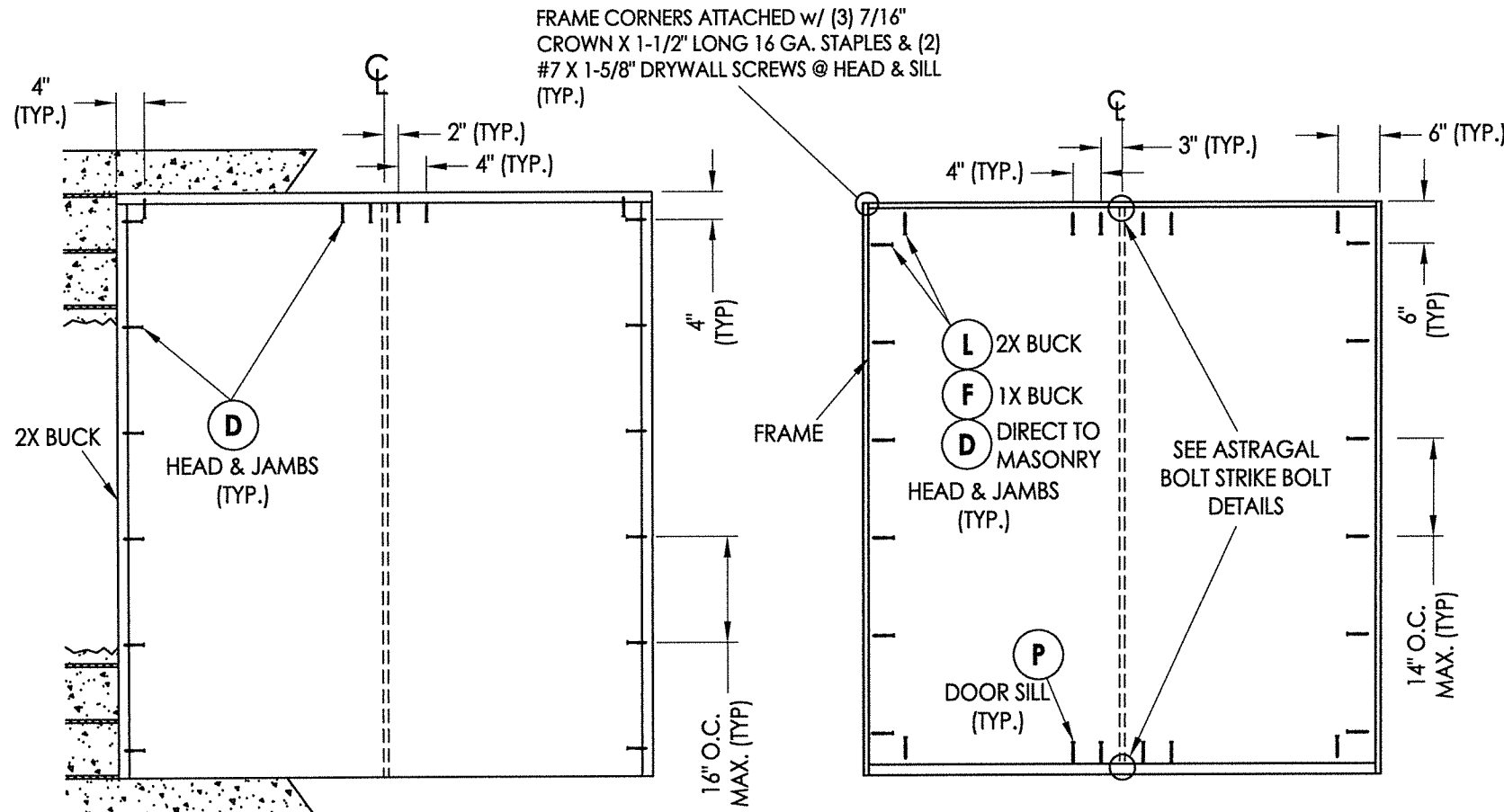
**FLORIDA PROFESSIONAL ENGINEER**  
 L. F. SCHMIDT  
 License No. 43409  
 P.F. 22

Documents Prepared By:  
 Lyndon F. Schmidt  
 P.E. No. 43409

**BUILDING CONSULTANTS, INC.**  
 P.O. Box 230, Valrico, FL 33595  
 Phone No.: 813.659.9197  
 FBPE Registry No. 9813

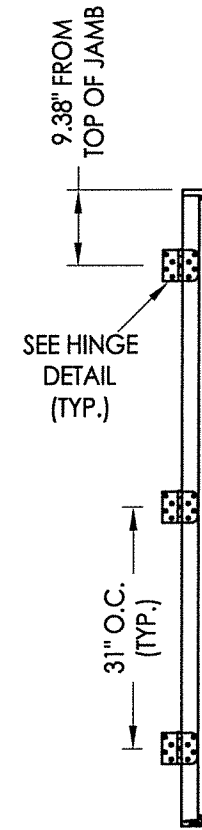
PRODUCT:	BMI COMPONENTS	
PART OR ASSEMBLY:	BUCK & FRAME ANCHORING	
NO.	DATE	BY
REVISIONS		
DATE:	7/05/22	
SCALE:	N.T.S.	
DWG. BY:	LFS	
CHK. BY:	RW	
DRAWING NO.:	FL-41560.1	
SHEET	5	OF 7

Z:\Clients\BMIA - Florida Product Approvals\FL-41560\C - Drawings\FL-41560 (2020)\FL-41560.1.dwg

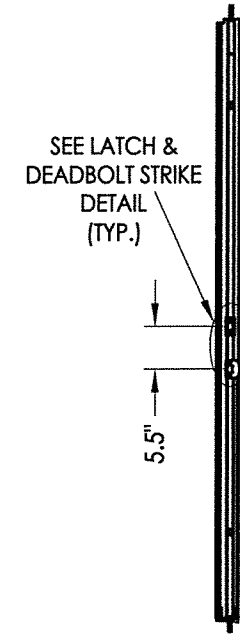


**2X BUCK ANCHORING**

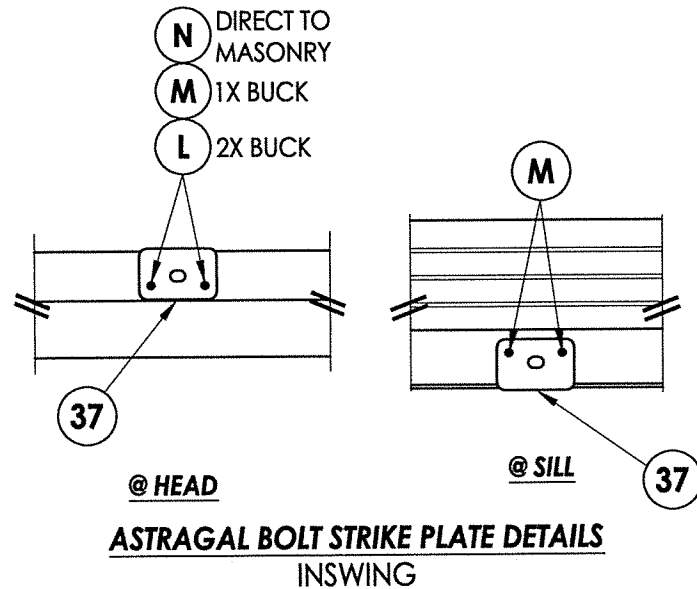
**FRAME ANCHORING**



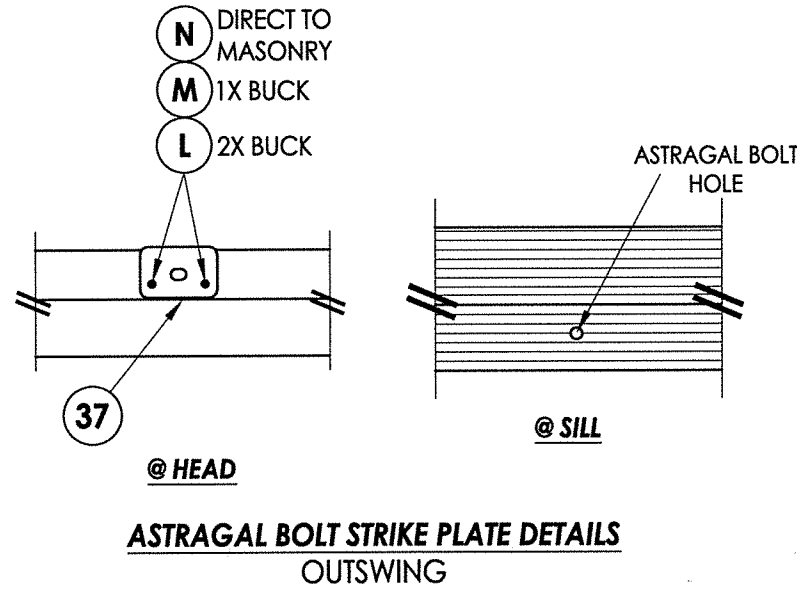
**HINGE JAMB**



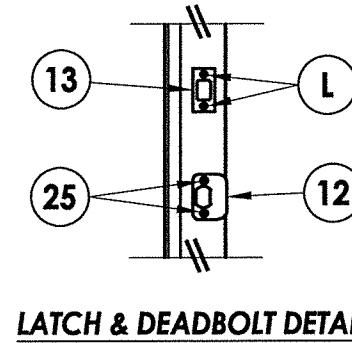
**ASTRAGAL**



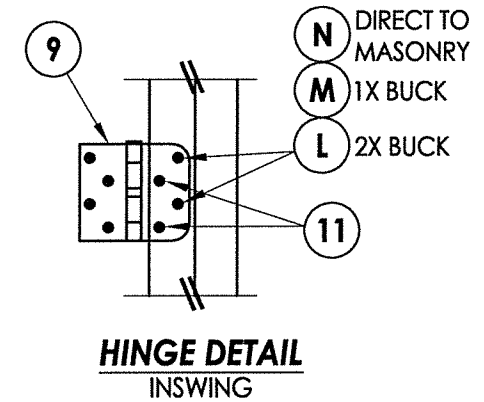
**ASTRAGAL BOLT STRIKE PLATE DETAILS INSWING**



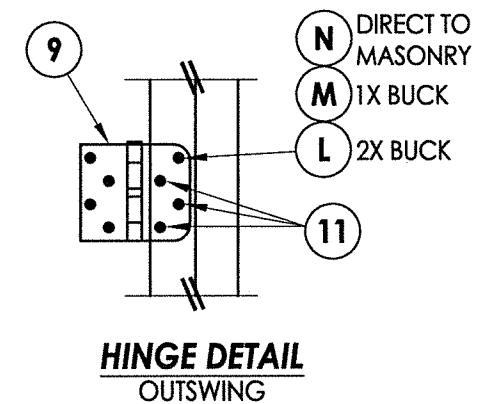
**ASTRAGAL BOLT STRIKE PLATE DETAILS OUTSWING**



**LATCH & DEADBOLT DETAIL**



**HINGE DETAIL INSWING**



**HINGE DETAIL OUTSWING**

**HARDWARE DETAILS**

Professional Engineer  
 F.L. SCHMIDT  
 License No. 43409  
 State of Florida  
 R.W. 8.8.22

Documents Prepared By:  
 Lyndon F. Schmidt  
 P.E. No. 43409

R.W.  
 BUILDING CONSULTANTS, INC.  
 P.O. Box 230, Vairico, FL 33595  
 Phone No.: 813.659.9197  
 FBPE Registry No. 9813

PRODUCT:	BMI COMPONENTS
PART OR ASSEMBLY:	BUCK & FRAME ANCHORING

NO.	DATE	BY	REVISIONS

DATE:	7/05/22
SCALE:	N.T.S.
DWG. BY:	LFS
CHK. BY:	RW
DRAWING NO.:	FL-41560.1
SHEET	6 OF 7

