

FRONTLINE® BLDG. PRODUCTS INC.

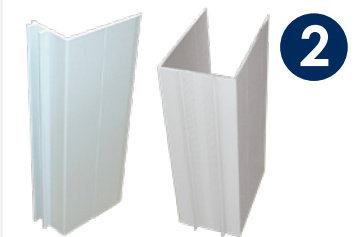
ENTRY DOOR SYSTEMS WITH A LIFETIME SOLUTION FOR DURABILITY AND **NO MORE PAINTING**



1

Fit & Finish

Fit & Finish that will last a Lifetime.
NO MORE PAINTING!



2

Jamb/Mull Cover

Durable, no-rot jamb covers. No chipping, no peeling, no cracking.



3

Nail Fin

Traditional fenestration installation and waterproofing.



4

1

2

2

3

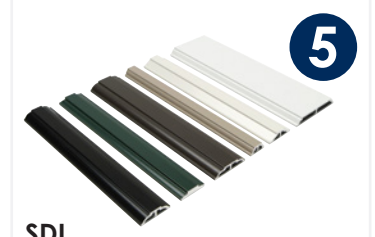
6



4

Transoms

Clear and decorative glass in all shapes: rectangle, round top, elliptical, and springline.



5

SDL

Aluminum SDL Bars add design and curb appeal to any door system. They won't warp or move in hot or cold climates.



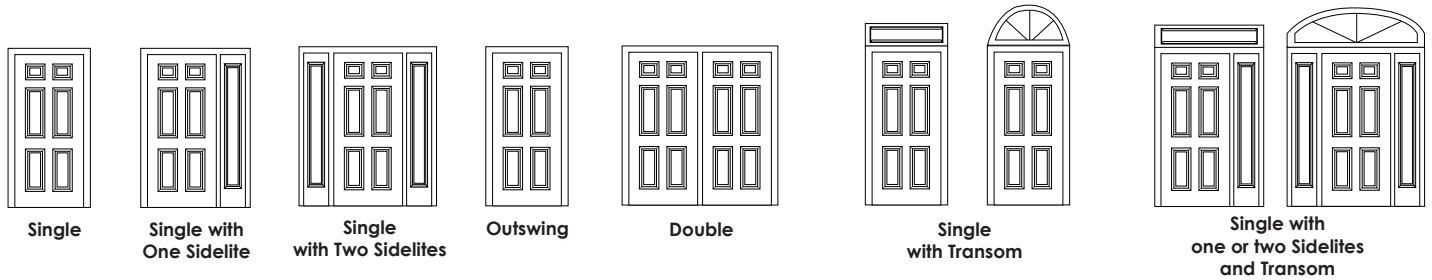
6

Brickmould & Crowline

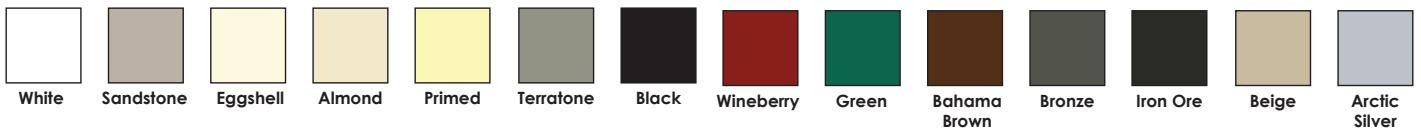
Traditional & Contemporary Design.

16 gauge extruded aluminum clad frame for all Entry Door Systems
Available in 14 standard colors with custom color capability.

CLAD ANY DOOR CONFIGURATION



STANDARD COLORS:



Pro-Series Garage Door Frame

90° & 45° FRAMES | FEATURES:

- .062 (16 gauge) extruded aluminum for strength and durability - with composite insert
- Heavy-duty steel corner gussets for perfectly mitered corners
- No wood in frames means no rot, no water wicking, no warping, and no bug infestation
- Optional 3-1/2" flat casing and J-mould (both field applied)
- Compliments the FrontLine entry door cladding system
- Limited Lifetime Warranty



DISTRIBUTED BY:



Connect with Us

- www.frontlinebldg.com
- sales@frontlinebldg.com
- 1-920-393-1340
- [Facebook](#) [LinkedIn](#) [YouTube](#)